



Mitchell Street
Chifley NSW 2036
Subscribe: <https://chifleyps.schoolzineplus.com/subscribe>

Email: chifley-p.school@det.nsw.edu.au
Phone: 02 9661 3014
Fax: 02 9661 6934



4 April 2018

FROM THE PRINCIPAL'S DESK

With the holiday fast approaching, I would like to congratulate all our students for their enthusiasm and hard work during the term. Over the start of the year, the students have embraced high expectations and through their effort helped to reinforce a positive and productive learning climate across the school. In particular, our student leaders continue to set a fabulous example as role models for the rest of the school. Congratulations and I'm pretty sure that everyone is looking forward to a well-deserved break at the end of next week.



FAREWELL TO MRS TOVEY

Sadly, we will be saying farewell to Mrs Tovey at the end of this term. She has accepted the position of Assistant Principal at Kensington PS. Mrs Tovey has been a significant part of our school community for the past 6 years. I would like to thank Mrs Tovey for her expertise, professionalism and extraordinary commitment to our students. Mrs Tovey leaves with the gratitude of the Chifley PS community and our heartfelt thanks. As a school community we wish Mrs Tovey all the very best and thank her for the enormous contribution she has made to our school.

EASTER HAT PARADE

The Easter Hat Parade is a celebrated annual school event at Chifley PS. Well done to the children for again making the Easter Hat Parade such a memorable spectacle. The design brief for Easter hats is always broad and open to considerable interpretation. The imagination and effort that went into the designs was incredible. It was fabulous to see so many parents and carers being part of the morning; it means a lot to the children and plays a critical role in their engagement at school.

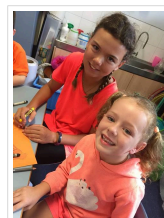
The children are incredibly proud of their school and love showing it off to all our families. Particular thanks goes to:

- Our amazing P&C for running the cake stall;
- Our local preschools being part of the excitement – I hope you had lots of fun; and
- Mrs Jreige and our dedicated teachers for organising an incredible Easter Hat Parade.



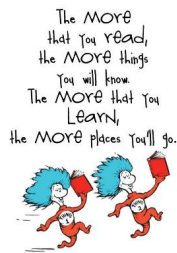
HARMONY DAY

In Week 8 we celebrated Harmony Day through a variety of classroom and whole school activities. Just like CPS, Harmony day is for everyone. And, just like CPS, it celebrates diversity through respect, inclusion and belonging. Our school community is represented by families from a myriad of cultural backgrounds. To be more specific, 24% of our students access English as an additional language or dialect (EAL/D). Harmony Day may have focussed our attention more acutely on what it actually means to be a strong and cohesive society, in reality I am privileged to see our amazing students celebrate the rich and diverse cultural tapestry that makes up our school community on a daily basis. Congratulations! And, an enormous thank you to our parents and carers for reinforcing the strong sense of community that exists within our school by supporting the class food stalls on the day.



HOLIDAY READING

It is extremely important that children continue to read during the holidays. Consistent daily reading routines and appropriately sourced books will ensure that holiday reading is as appetizing as any leftover Easter Eggs. A holiday reading contract will be sent home in Week 11. Happy reading!



TELL THEM FROM ME (TTFM) STUDENT SURVEYS

Opportunities for formal feedback provide are used to support ongoing school improvement. Students in Years 4-6 will be participating in TTFM surveys. The surveys will be completed before the end of term and will provide a window into student engagement and how they feel about different aspects of school life. I look forward to sharing overall survey results once released.

SCHOOL COUNCIL AND P&C MEETING

The next School Council and P&C meetings will be held on Monday 9th April. Involvement in the Chifley PS P&C is encouraged and is a fabulous way to become actively involved in our school.

- School Council: 6.00-6.30pm
- P&C: 6.30-7.30pm

STUDENT ACHIEVEMENTS

Congratulations

Kory T, Lochlin M and Kye W have been selected to represent combined Sydney Coastal/Eastern Suburbs PSSA Rugby League team in the 11s and Open division Next Tuesday. Well done boys!!

Lochlin M has also been selected to represent the Sydney East Rugby League Team in the 11s at the upcoming NSW PSSA Carnival. Congratulations Lochlin!

Well done to Toby G for representing our school in the Regional Swimming Carnival!

**CONGRATULATIONS
WELL DONE!**

As Principal of Chifley PS, I strongly believe that education is a shared journey. My office door is always open if you would like to discuss any issue regarding your child's education.

This will be the last newsletter for this term; the last day of school is Friday 13 April. Term 2 resumes on Tuesday 1 May. Have a safe and happy holiday.

David North
Principal
Chifley Public School

GROW YOUR MIND



This is teaching your brain that intelligence is not fixed and that we are all capable of growing and learning. Children shared stories of times they made a mistake and how this mistake actually helped them master a new skill. Each classroom at Chifley has their own 'Flip to Flourish' filled with images that promote ways to look after your mind. These three images were the focus of this week's emotional well-being learning.



1. Treat mistakes as a chance to learn and grow
2. Start adding YET to the things you tell yourself you cannot do

THE POWER OF YET!



Grow Your Mind has been exploring growth mindset with K-6 at Chifley. Children investigated what it felt like to say the things they could not do and then to say them again with a YET at the end.



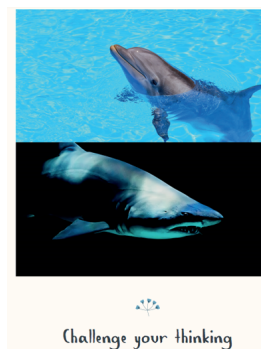
MINDFUL BREATHING...

Children are learning how to do deep belly breathing. When they inhale they need to try and get the soft teddy to rise a little, when they exhale the soft teddy should lower back down. They need to do this without using their hands or back movement, simply with their breath. The idea is they practice this when they are calm and eventually they can call on this type of breathing when they are standing up, sitting down etc. It is a process for children to learn that proper breathing involves your belly expanding when inhaling - not the other way around!



This week in Grow Your Mind we have been talking about the power of optimistic thinking. We used the analogy of shark vs dolphin thinking. A shark thought is an unhelpful thought, whereas a dolphin thought is a helpful one. E.g. You make a

mistake or experience a setback, a shark thought might be *"Oh I'm so terrible at this, I will never get it"* Is this thought really going to help you with what you need to do? How else could you look at it? What would a DOLPHIN thought be? *"This is tough but I guess mistakes help me learn, I need to stick with it"*



This ties in with our growth mindset tree we were focusing on last week. In fact a key to developing a growth mindset and something called GRIT is growing our optimism.

So why grow optimism? Well research says that when we are optimistic we are more resilient. Life is full of ups and downs, with optimism we are more able to problem solve and be creative in how we approach our difficult times. Some people are naturally more optimistic but it is something anyone can grow.

Tip #1 Every time you have a shark thought, notice it, is there a dolphin way to look at it?

Tip #2 Keep praising yourself and the people around you for the amount of EFFORT they put in, rather than on 'being smart' or 'being awesome'. These are lovely things to say, but if we reward effort we are reminding ourselves that reaching our goals takes perseverance.

DREAMTIME

Trevor Walker is our wonderful Dreamtime teacher and last week in the class, he spoke about growing up as an Aboriginal boy and the differences in growing up back then and now. He shared Culture, History and Dreamtime stories. Have a look at some of the great face paint that the children experienced.



DIDJ GROUP

Have a look at the Didj boys at Didj practice last week.



SCHOOL ASSEMBLY NEWS

School assemblies in Term 1 and 4 will now be held on Fridays from 1-1:30pm in the hall.

Week 10	6 April	Writer of the Term
Week 11	13 April	Anzac Day Assembly

MINI COMMONWEALTH GAMES

THURSDAY THE 5TH OF APRIL WEEK 10

Please join us for a fun day celebrating the start of the Commonwealth Games.

Students will be required to dress in the colours of their "country" which is listed below.

Class	Country	Colours
Kindy	Australia	Green and Gold
1/2K	England	Red and white
1/2J	New Zealand	Black and white
3S	Malta	Red and white
4C	Jamaica	Green, yellow and black
5S	India	Orange, white and green
6W	Kenya	Black, red and green

All parents and carers are welcome to come along and cheer on their children and stay for a picnic lunch.

Here is a brief rundown of the day...

- 12-12:30 mini torch relay - children will select one person from each class to relay run the torch. It will be taken to netball court and placed in a holder. The countries will march out with their flags to music on netball court. Games will be declared open by Mr North.

- 12:30-1:00 Rotation 1
- Lunch: Picnic lunch parents/spectators
- 1:45-2:15 Rotation 2
- 2:15-2:45 Rotation 3
- 2:45-3:00 Games officially closed - Award Ceremony (time permitting)

FROM THE OFFICE

LUNCH ORDERS

The new tender from the canteen has been approved and will be operating from next term. Lunch orders will remain the same until then, please ensure that all lunch orders are in the office upon arrival to school (no later than 9:30am) as no late lunch orders can be accepted. We would like to thank Poppy's in Matraville for the delicious \$5 meals that they have provided us this term.

PAYMENTS

Please note that statement of accounts will be going home soon. If you have any queries or discrepancies, please contact the office.

Year 5 & 6 Canberra Excursion costs will be shown as a bulk amount and payments can be made either in full or as per the payment plan.

If you are experiencing financial difficulties, please contact Mr North and we can establish a payment plan to pay off your account.

Cash and cheque can be sent to school and given to your class teacher or can be directly dropped off at the office. If paying by cash please send the exact amount. Eftpos payments can also be made at the office.

The preferred method of payment is Parent Online Payments through our school website. Parent online payments (POP) provide parents and school debtors with a **secure** payment facility to deposit into the school's account via a credit or debit card. The payment portal is accessed via the school's website and allows parents to pay using either a Visa or MasterCard credit or debit card.

Please visit our school website via the link below and click on "Make a payment". Once you fill out the payment details, you have an instant receipt. It is a safe and secure way to pay for school fees, performances and excursions.

<http://www.chifley-p.schools.nsw.edu.au/>



VOLUNTEERING AT SCHOOL

Parent/Carer volunteers are actively encouraged at CPS. It is simple, to become a volunteer please provide the office with 100 points of identification and sign the volunteer declaration form. Volunteering could include involvement in morning reading, assisting students with class based activities or helping with P&C events. It is very much appreciated!



NEW ENROLMENTS FOR KINDERGARTEN 2019

If any families are intending to enrol siblings for 2019, please come to the office and collect an enrolment form. It is never too early to get all the paperwork started. If you know any families that intend to enrol for next year, please encourage them to start the process as soon as possible in order to assist with orientation arrangements.

Chifley Public School
A community school



Is your child turning 5 years of age before 31st July 2019?

2019 Kindergarten Enrolment

We are a caring and inclusive school offering an educational learning environment underpinned by high expectations and individual success.

In Kindergarten, our student centred teaching and learning model is based on a positive learning climate and supported through:

- Targeted teaching of foundational literacy and numeracy skills;
- An embedded learning support programme;
- A whole school approach to student engagement and wellbeing;
- Strong cultural and community programmes; and
- Onsite before and after school care.

You are welcome to visit our school and learn more about Kindergarten 2019.



Kindergarten 2019



Kindergarten Open Mornings

Term 3 / 9.15 – 11.00am

You have the choice of two Kindergarten open mornings:

Friday 7th September

or

Friday 21st September

Please contact the office to confirm attendance at one of our Kindergarten open mornings.

These morning visits include:

- A student introduction to school programme; and
- A parent information & readiness for school workshop.

Kindergarten Orientation Mornings

Term 4 / 9.15-11.00am

To further support transition to school, we have four Kindergarten orientation mornings:

Friday 16th November

Friday 23rd November

Friday 30th December

Friday 7th December

Children attend all sessions as the programme has been sequentially developed to reinforce Readiness for School.

Enrolment application forms are available from the school office, or by downloading from the school website.

School walk through tours are available Terms 1-4 by appointment with the school office.

Chifley Public School
Mitchell St
Chifley NSW 2038

Ph 9861 3014
W <http://www.chifley-p.schools.nsw.edu.au/>
E chifley-p.school@det.nsw.edu.au



CHILD DENTAL SCREENING PROGRAM

A note went home last week to inform you that all school age children are eligible to have a free dental assessment at school by a Dental clinician from the South Eastern Sydney Local Health District Oral Health Service. A Dental Clinician will carry out a brief assessment of your child's teeth using a sterile mirror and dental probe. No treatment will be given at the assessment. Your child will bring a note home to you to inform you of the results of the assessment. If you are interested in your child participating in this opportunity, please could you fill in the consent form on the back of the note that was sent home and return it to school as soon as possible. The screening day will be in Term 2. Dates will be advised closer to the time.



UNIFORMS

Berelle School Wear is located at 1/96 Maroubra Road, Maroubra. Tel: 93492705

Trading Hours: Monday to Friday 9am-5pm Saturday 9am-1pm
Sunday CLOSED

PLEASE NOTE: School hats (\$15) are only available to purchase at school.

SCHOOL HOLIDAY VACATION CARE PROGRAM



Destination Discover Us!
YMCA VACATION CARE

Indoors Outdoors and Beyond!

Autumn 2018 Holiday Program
BOOK NOW TO SECURE YOUR PLACE!

YMCA Malabar OSHC
231-239 Franklin Street, Malabar
☎ 0418 697 331 | ymcansw.org.au/malabar
✉ oshc.malabar@ymcansw.org.au

YMCA NSW EMPOWERMENT/HEALTHY LIVING/SOCIAL IMPACT

BEFORE SCHOOL CARE

We help children get ready for the school day by running quiet yet engaging activities. We can also serve a nutritious breakfast at no extra cost.

Before School Care starts at 7 am and runs through until **9 am**.

AFTER SCHOOL CARE

Once the school day is done, we help children wind down. We offer afternoon tea and mix of activities where children can socialise and broaden their horizons.

After School Care starts at **3 pm** and runs through until **6.30 pm**.

<https://www.ymcansw.org.au/centres/ymca-little-bay-community-of-schools-oshc/before-and-after-school-care/>



YMCA Little Bay COS OSHC

Available at
Chifley Public Schools

The YMCA is a childsafe organisation, we acknowledge that we are living our safety value for children and young people.

Before + After School Care
We value and respect parents as partners in the care and education of children. Our program follows the National Quality Framework, offering a range of exciting activities that encourages independent learners.

ENROL today to secure your child's place!
ymcansw.org.au/littlebay

☎ 0407 184 899 | 0437 804 871
oshc.littlebay@ymcansw.org.au

YMCA NSW EMPOWERMENT/HEALTHY LIVING/SOCIAL IMPACT

COMMUNITY NEWS



NSW YOUTH WEEK 2018 | **PCYC EASTERN SUBURBS** | **Bayside Council**

Park Fest

Monday 16 April, 10:00am - 4:00pm
PCYC and Rowland Park, Bunnerong Road, Daceyville

Live music and performances
Soccer, basketball and volleyball
Zombie special FX makeup and zombie race
Guerrilla weaving
Inspiring stories from other young people
BBQ
Boxing and fitness circuits
Giant jenga
Relay challenges
Soap making and other fun workshops

Free Event - No Booking Required

Advance Diversity Services | NSW YOUTH WEEK | PCYC | Bayside Council | Sydney mcs

Youth Week Events

UNITY THROUGH DIVERSITY



Park Fest

Live music and performances
Soccer, basketball and volleyball
Zombie special FX makeup and zombie race
Guerrilla weaving
Inspiring stories from other young people
BBQ
Boxing and fitness circuits
Giant jenga
Relay challenges
Soap making and other fun workshops

Monday 16 April 2018
10:00am - 4:00pm
PCYC and Rowland Park
Bunnerong Road, Daceyville

Free Event - No Booking Required

Better than TED

Thursday 19 April 2018, 9:30am - 12:30pm
Rockdale Library, 444-446 Princes Highway - Enquiries: 9562 1821

Thursday 19 April 2018, 1:30pm - 4:30pm
Eastgardens Library, 152 Bunnerong Road - Enquiries: 9366 3888

Hosted by professional speaker Sean Murphy. 'Better than TED' is a workshop for high school students who want to rock at public speaking - no PowerPoint required! So whether it's for better marks in class or to make a bigger impact in life, 'Better than TED' is the place to get started!

Free event but bookings essential at <https://baysidelibrary.eventbrite.com>

Graphic Novel Selection Fair

Monday 23 April 2018, 10:00am - 4:00pm
Eastgardens Library, 152 Bunnerong Road - Enquiries: 9366 3888

Tuesday 24 April 2018, 10:00am - 4:00pm
Rockdale Library, 444-446 Princes Highway - Enquiries: 9562 1821

Have a browse through the latest comics and graphic novels and select your favourites for the library's collection.

Free event, no bookings necessary, just drop in.

Your Room is Your Canvas

Monday 23 April 2018, 2:00pm - 3:30pm
Eastgardens Library, 152 Bunnerong Road - Enquiries: 9366 3888

Monday 23 April 2018, 2:00pm - 3:30pm
Rockdale Library, 444-446 Princes Highway - Enquiries: 9562 1821

Virtual reality 3D painting workshop using 'Tilt Brush' by Google.

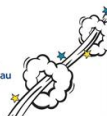
Free event but bookings essential at <https://baysidelibrary.eventbrite.com>

PCYC Basketball Clinic

Friday 20 April 2018, 10:00am - 12:00pm
McCarthy Reserve, 9 Ador Avenue, Rockdale

Come along and play a game of basketball. Learn some new skills and tips.

Gold coin donation. Bookings essential via email to JRokina@pcycnsw.org.au



Chifley Public School

Located in the
School hall (entry
via Burke St)

10.00am-12.00pm

Thursdays

During School Terms

\$3 per session & a piece of fruit

Enquiries: (02) 8338 8502

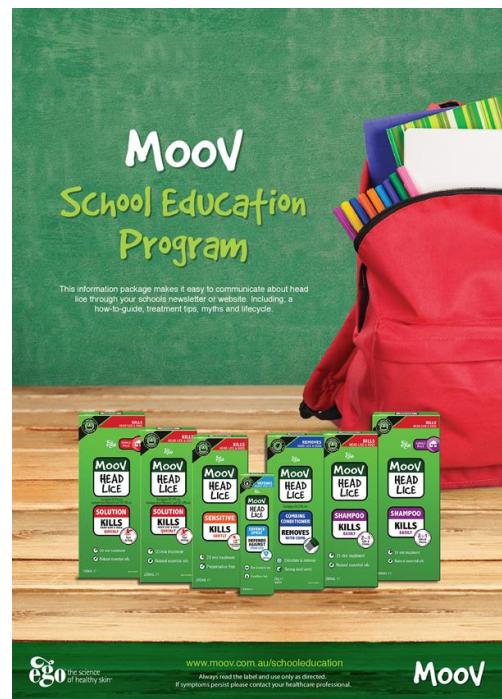
Supported Playgroups

Supported playgroups aim to empower families to support young children's development through participation in a variety of developmentally appropriate play. Supported playgroups are led by qualified early childhood educators and allow families to participate in a range of new activities and experiences.

Our staff are qualified in Blue Book assessments, key word signing, active play and healthy nutrition as well as guest speakers coming regularly. We also have a family worker who attends all our playgroups, if you need that little bit of extra help.

To enquire please contact our Family Support Team on (02) 8338 8506 or email familysupport@secc.sydney

www.secc.sydney



Moov

School Education Program

This information package makes it easy to communicate about head lice through your school newsletter or website. Including a how-to-guide, treatment tips, myths and lifecycle.

www.moov.com.au/schooleducation

Always read the label and use only as directed.
If symptoms persist please contact your healthcare professional.

Moov

Don't forget to follow us on Facebook and Twitter for more up to date and exciting news!!

<https://www.facebook.com/ChifleyPublicSchool>

<https://twitter.com/ChifleyPS>