



CHIFLEY PUBLIC SCHOOL
CHIFLEY CHATTER

A quality education in a caring environment

Mitchell Street
Chifley NSW 2036
Subscribe: <https://chifleyps.schoolzineplus.com/subscribe>

Email: chifley-p.school@det.nsw.edu.au
Phone: 02 9661 3014
Fax: 02 9661 6934



21 March 2018

FROM THE PRINCIPAL'S DESK

At CPS learning technologies are utilised to consolidate, extend and enrich classwork and act as an educational amplifier to access information, build content and demonstrate and communicate learning. Ongoing access to an information, communication and technology rich curriculum builds confidence and success, and challenges the students as inquisitive and adaptable learners.

LAPTOPS FOR LEARNING

Laptops for learning aims to raise \$10 000 to purchase a laptop bank and a mobile charging unit to expand access to learning technologies across the school. I encourage parents and carers to take a look at Laptops for learning on Schoolsplus.

All donations over \$2 are tax-deductible.

Laptops for learning link:

<https://www.schoolsplus.org.au/laptops-for-learning/>



Computers are critical in strengthening future focused, learning opportunities and enabling our students as successful and confident learners in an information, communication and technology rich school curriculum.

Laptops for learning aims to raise \$10,000 to purchase a laptop bank and a mobile charging unit to expand access to learning technologies across the school.

All donations over \$2 are tax-deductible.



Laptops for learning link: <https://www.schoolsplus.org.au/donate/projects/>

Chifley Public School
Mitchell St
Chifley NSW 2036

Ph 9661 3014
W <http://www.chifley-p.schools.nsw.edu.au/>
E chifley-p.school@det.nsw.edu.au



PARENT TEACHER WEEK

Parent/Teacher interviews are being conducted this week. They provide an opportunity to discuss your child's engagement, performance and progress at school. It's not too late to talk to your child's teacher if arrangements for an interview have not already been made. Please contact your child's teacher to arrange a suitable time.

PARENT CLASS REPRESENTATIVES

An enormous thank you to the mums and dads who have volunteered to act as parent class representatives for 2018. Your time and commitment to the school is very much appreciated.

Primarily, the role of the parent class representative is to assist in the development of school community and act as a communication link between home and the class. The role includes:

- Ongoing communication with the class teacher to help advertise and facilitate class initiatives and events;
- Assisting in the communication of class news to parents/carers;
- Helping to organise class volunteers i.e. morning reading;
- Welcoming new families to the school community;
- Organising out of school social activities for the class/families; and
- Liaising with other class representatives and P&C as a coordinated approach to whole school activities.

EASTER RAFFLE AND HAT PARADE

The Annual Easter Raffle will be held as part of the Easter Hat Parade on Thursday 29th March. Donations for the Easter hampers would be greatly appreciated. Raffle tickets can be purchased each morning before school. **Tickets are \$1 each or 3 for \$2.** We look forward to seeing everyone for the pageantry of the Easter Hat Parade next week.



COLES SPORT FOR SCHOOLS

Please help to support the purchase of school sport equipment by collecting Coles Sport For Schools vouchers. You will find a collection box in the school office and/or Coles Eastgardens. Your support is greatly appreciated.



ICAS TESTS

If parents have any questions regarding ICAS testing this year please contact me.

SCHOOL ATTENDANCE

School attendance is critical to student outcomes. When your child goes to school every day they will achieve their best. Here are some tips for helping your child turn up, achieve more and maintain a good attendance pattern.

Let your child know it is important to go to school every day

One of the best ways to encourage your child to go to school every day is to talk about school in a positive way. Tell your child it is important that they go to school, even on special days like their birthday or the last day of term. Occasionally, your child may need to stay home from school—they might be sick, or there might be serious family matters you have to attend to (such as a funeral). While these kinds of events are unavoidable, other events such as shopping trips, holidays, visiting family and friends, or appointments such as haircuts can be scheduled out of school hours.

Create routines for your child

Help your child get organised and prepare for their school day. Set a regular bedtime and morning routine. Encourage them to lay their school clothes out the night before and pack their bags in advance so they can get to school on time.

EVERY MINUTE COUNTS....			
When your child misses just...	that equals...	which is...	and therefore, from Kindy to Year 12, that is...
10 minutes a day	50 minutes of learning each week	Nearly 1½ weeks per year	Nearly ½ a year of school
20 minutes a day	1 hour and 40 minutes of learning each week	Nearly 2½ weeks per year	Nearly a year of school
½ hour a day	½ a day of learning a week	4 weeks a year	Nearly 1 ½ years of learning
1 hour each day	1 whole day of learning each week	8 weeks per year or nearly a term a year.	Over 2 ½ years of learning

Your child's best learning time is at the beginning of the day...

Check the time your school starts. DON'T BE LATE!

How can you help?

- Talk positively about school with your child.
- Create and maintain a routine.
- If possible, make appointments out of school hours.
- Avoid taking your child away for holidays during the school term.

<http://www.learningpotential.gov.au/>

SPECIAL THANKS

Special thanks to Bob Howison for generously donating a significant number of modified golf clubs to enable our younger students to participate in our Friday Golf Clinic.

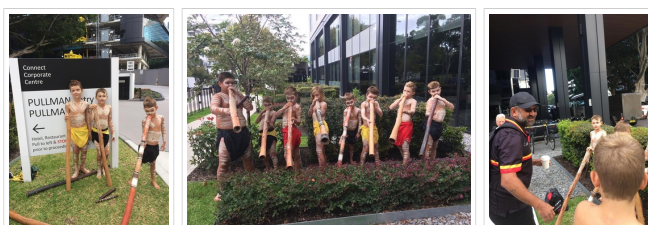
Thank You

As Principal of Chifley PS, I strongly believe that education is a shared journey. My office door is always open if you would like to discuss any issue regarding your child's education.

David North
Principal
Chifley Public School

DIDJ BOYS

Chifley PS Didj boys performed at the Pullman at Mascot for the State AECG Conference last week. Well done boys!



GROW YOUR MIND



Last week in Grow Your Mind K-6 became a brain! Each student was given a different role in the brain to act out. The Guard Dog needed to deliver a letter to the Wise Owl. The Sifting Sooty needed to keep focused and the Elephant needed to remember the instructions of the letter. Everyone else played the role of neurons. Initially they blocked the letter going to the Wise Owl. Then everyone thought of something to be thankful for and something that brought them joy. After this the Guard Dog could get the letter to the Wise Owl super quickly. And what did the letter say?

ELEPHANT, PLEASE TELL THE WISE OWL TO REMEMBER TO:

1. *Be kind*
2. *Move my body*
3. *Practice gratitude*
4. *Feel joy*



Year 3-6 dived deeper into the role of neurotransmitters and how to increase them. Test your child's hippocampus by asking them what the acronym DOSE stands for.

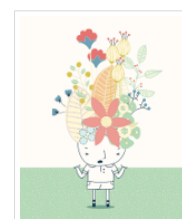
D – Dopamine
O – Oxytocin
S – Serotonin
E – Endorphins

#1 Ask your kids at the end of the day, what was your happy moment today? When did you feel joy?

#2 On the weekends make sure everyone moves their body, turns off the screens for a while and gets outside.

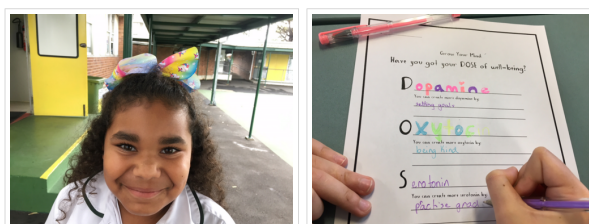
INTERNAL WEATHER AND EMOTIONS

Grow Your Mind has been taking students on an adventure around their bodies. Students have explored their internal weather. They close their eyes and take note of what they are feeling, **"Happy – sunny"** **"Nervous – windy"**. Some weather reports became more complex **"My internal weather is cloudy, but the sun is poking through and there is definitely a chance of a rainbow later on"**. We have been exploring the power of naming emotions, according to Dr. Dan Siegel, we "Name it to Tame it", which means when we name our emotions we are giving our Guard dog a chance to not react in such a strong way.



#1 Keep a record of your internal weather, notice how it changes. Feelings come and go, so try not to give too much power to the uncomfortable ones like anger and jealousy.

#2 You can feel whatever you like, whenever you like. Just try and make sure your reaction matches the problem you are facing.



SCHOOL ASSEMBLY NEWS

School assemblies in Term 1 and 4 will now be held on Fridays from 1-1:30pm in the hall.

Week 8	23 March	Choir performance
Week 9	30 March	No Assembly – public holiday
Week 10	6 April	Writer of the Term
Week 11	13 April	No Assembly

SUPPORTED PLAYGROUP AT CPS

Did you know that every Thursday, South Eastern Community Connect's Family Support Team runs a Supported Playgroup in the hall from 10am-12pm during school terms? The cost is \$3 per session which includes a piece of fruit.



The playgroups are led by qualified early childhood educators and allow families to participate in a range of new activities and experiences. Their staff are qualified in Blue Book assessments, key word signing, active play and healthy nutrition as well as having guest speakers regularly.

To enquire, please contact the Family Support Team on (02) 8338 8506 or email familysupport@secc.sydney

TRAVEL TO SCHOOL SURVEY

Dear Parents and Carers

Please help us with our Travel to School online survey. We would like as many school children as possible to complete it. There are 6 x \$100 bike shop vouchers to be won!

Our team at Randwick City Council is developing a strategy to encourage participation in walking, cycling, scooting and using public transport to get to and from school. The results of this survey will help us understand what students travel patterns are now, and help generate some ideas on how to improve participation.

Please encourage your child/children to complete the survey.

<http://www.randwick.nsw.gov.au/services/transport/transport-for-kids>

The survey should take about five minutes, it's designed to be simple enough for young primary school students to complete (some younger ones might need a little bit of help) and super easy for high school students to do on phones or on the bus on the way home.

To enter the draw for a \$100 voucher students will need to provide either an email or phone number as a contact point. All entries are confidential.

Thank you from the Sustainable Transport Team at Randwick City Council.

Walk, ride, scoot, bus or drive?
How do you get to school?

Want to win a \$100 bike shop voucher?*

Answer a few quick questions about how you get to school and you could win!

Head to www.randwick.nsw.gov.au/schooltravel to fill in our survey by 5pm, Tuesday 3 April 2018 and you'll be in the running!



*Conditions: Winners will receive 1 of 6 local bike shop gift vouchers, each valued at \$100.


Randwick City Council
a sense of community

1300 722 542
council@randwick.nsw.gov.au

FROM THE OFFICE

LUNCH ORDERS

The new tender from the canteen has been approved and will be operating from next term. Lunch orders will remain the same until then, please ensure that all lunch orders are in the office upon arrival to school (no later than 9:30am) as no late lunch orders can be accepted. We would like to thank Poppy's in Matraville for the delicious \$5 meals that they have provided us this term.

PAYMENTS

Please ensure that any outstanding school fees are paid as soon as possible. Thank you.

Cash and cheque can be sent to school and given to your class teacher or can be directly dropped off at the office. If paying by cash please send the exact amount. Eftpos payments can also be made at the office.

The preferred method of payment is Parent Online Payments through our school website. Parent online payments (POP) provide parents and school debtors with a **secure** payment facility to deposit into the school's account via a credit or debit card. The payment portal is accessed via the school's website and allows parents to pay using either a Visa or MasterCard credit or debit card.

Please visit our school website below and click on "Make a payment". Once you fill out the payment details, you have an instant receipt. It is a safe and secure way to pay for school fees, performances and excursions.

<http://www.chifley-p.schools.nsw.edu.au/>

Chifley Public School

Mitchell St
Maitland
2036
Phone: 9661 3014

Home Our school Explore CP's Curriculum & activities Caring for students School years Aboriginal Education Search info...



A quality education in a caring environment

Chifley Public School takes pride in delivering an excellent education in a warm and nurturing environment. These photos and galleries from 2017 demonstrate just some of the various opportunities at our school.

News Newsletters Calendar Gallery Contact us **Make a payment**

KINDERGARTEN 2019

Chifley Public School
A community school



Is your child turning 5 years of age before 31st July 2019?

2019 Kindergarten Enrolment

We are a caring and inclusive school offering an educational learning environment underpinned by high expectations and individual success.

In Kindergarten, our student centred teaching and learning model is based on a positive learning climate and supported through:

- Targeted teaching of foundational literacy and numeracy skills;
- An embedded learning support programme;
- A whole school approach to student engagement and wellbeing;
- Strong cultural and community programmes; and
- Onsite before and after school care.

You are welcome to visit our school and learn more about Kindergarten 2019.



Kindergarten 2019



Kindergarten Open Mornings

Kindergarten Orientation Mornings

Term 3 / 9.15 – 11.00am

You have the choice of two Kindergarten open mornings:

Friday 7th September

or

Friday 21st September

Please contact the office to confirm attendance at one of our Kindergarten open mornings.

These morning visits include:

- A student introduction to school programme; and
- A parent information & readiness for school workshop.

Enrolment application forms are available from the school office, or by downloading from the school website.

School walk through tours are available Terms 1-4 by appointment with the school office.

Term 4 / 9.15-11.00am

To further support transition to school, we have four Kindergarten orientation mornings:

Friday 16th November

Friday 23rd November

Friday 30th December

Friday 7th December

Children attend all sessions as the programme has been sequentially developed to reinforce Readiness for School.

Chifley Public School
Mitchell St
Chifley NSW 2036

Pn 9661 3014
W <http://www.chifley-p.schools.nsw.edu.au/>
E chifley-p.school@det.nsw.edu.au



P&C NEWS



#Thursday 29th March we will be holding a cake stall at the Easter hat parade. If you are able to assist please contact the p and c (you don't have to be on the committee to volunteer)

 **chifleypandc@gmail.com** 

Also if you would like to donate any goodies please leave them in the canteen.

#We are currently looking for a landscaper who is able to come in and give us a quote to lay our fundraising bricks... If this is you or someone you know get in contact with us!

Class Parent Reps 2018
Rebecca (Georgia's mum) (k)
A (1/2J)
B (1/2K)
Herni (Daunte's mum) (3)
John (Kahn's dad) (4)
Tata (Anastasia's mum) (5)
Michelle (Kye's mum) (6)

Fundraising ideas for 2018
#5C project
#mother's/father's day stalls
#cake stalls
#cook book
#disco
#sausage sizzle
#raffles

If you have any other ideas please get in contact with us



Special mention and thanks to Bob Howison for kindly making and donating golf clubs towards the Friday golf program

**NEXT MEETING: MONDAY 9TH APRIL
630PM IN THE SCHOOL LIBRARY**

PIC-COLLAGE

DZP DANCE

LUNCHTIME DANCE CLASSES

CHIFLEY PUBLIC SCHOOL

LEARN WITH THE BEST

EXPERIENCE THE DZP ENERGY & MAKE 2018 YOUR CHILD'S YEAR TO DEVELOP THROUGH DANCE

TUESDAY LUNCHTIMES | JAZZ & CONTEMPORARY
WEDNESDAY LUNCHTIMES | HIP HOP & POPPING

CONTACT US FOR A FREE TRIAL LESSON

DZP.COM.AU



1300 908 804 | CLASSES@DZP.COM.AU

Uniforms at Berelle in Maroubra

Berelle School Wear is located at 1/96 Maroubra Road, Maroubra. **Tel:** 93492705

Trading Hours: Monday to Friday 9am-5pm Saturday 9am-1pm Sunday CLOSED

PLEASE NOTE: School hats (\$15) are only available to purchase at school.

YMCA OOSH

SCHOOL HOLIDAY VACATION CARE PROGRAM

Destination Discover Everywhere
YMCA VACATION CARE

Indoors Outdoors and Beyond!

Autumn 2018 Holiday Program
BOOK NOW TO SECURE YOUR PLACE!

YMCA Malabar OSHC
231-239 Franklin Street, Malabar
☎ 0418 697 331 | ymcansw.org.au/malabar
✉ oshc.malabar@ymcansw.org.au

YMCA NSW EMPOWERMENT/HEALTHY LIVING/SOCIAL IMPACT

BEFORE SCHOOL CARE

We help children get ready for the school day by running quiet yet engaging activities. We can also serve a nutritious breakfast at no extra cost.

Before School Care starts at **7 am** and runs through until **9 am**.

AFTER SCHOOL CARE

Once the school day is done, we help children wind down. We offer afternoon tea and mix of activities where children can socialise and broaden their horizons.

After School Care starts at **3 pm** and runs through until **6.30 pm**.

<https://www.ymcansw.org.au/centres/ymca-little-bay-community-of-schools-oshc/before-and-after-school-care/>

YMCA Little Bay COS

OSHC



Available at
Chifley Public Schools

The YMCA is a childsafe organisation, we acknowledge that we are living our safety value for children and young people.

Before + After School Care

We value and respect parents as partners in the care and education of children. Our program follows the National Quality Framework, offering a range of exciting activities that encourages independent learners.

ENROL today to secure your child's place!
ymcansw.org.au/littlebay

0407 184 899 - 0437 804 871
oshc.littlebay@ymcansw.org.au

YMCA NSW
EMPOWERMENT/HEALTHY LIVING/SOCIAL IMPACT



Youth Week Events

UNITY THROUGH DIVERSITY



Live music and performances
Soccer, basketball and volleyball
Zombie special FX makeup and zombie race
Guerrilla weaving
Inspiring stories from other young people
BBQ
Boxing and fitness circuits
Giant jenga
Relay challenges
Soap making and other fun workshops

Monday 16 April 2018
10:00am - 4:00pm
PCYC and Rowland Park
Bunnerong Road, Daceyville

Free Event - No Booking Required

COMMUNITY NEWS




Monday 16 April, 10:00am - 4:00pm
PCYC and Rowland Park, Bunnerong Road, Daceyville

Live music and performances
Soccer, basketball and volleyball
Zombie special FX makeup and zombie race
Guerrilla weaving
Inspiring stories from other young people
BBQ
Boxing and fitness circuits
Giant jenga
Relay challenges
Soap making and other fun workshops

Free Event - No Booking Required




Chifley Public School

Located in the School hall (entry via Burke St)

10.00am-12.00pm
Thursdays
During School Terms
\$3 per session & a piece of fruit
Enquiries: (02) 8338 8502

Supported Playgroups

Supported playgroups aim to empower families to support young children's development through participation in a variety of developmentally appropriate play. Supported playgroups are led by qualified early childhood educators and allow families to participate in a range of new activities and experiences.

Our staff are qualified in Blue Book assessments, key word signing, active play and healthy nutrition as well as guest speakers coming regularly. We also have a family worker who attends all our playgroups, if you need that little bit of extra help.

To enquire please contact our Family Support Team on (02) 8338 8506 or email familysupport@secc.sydney

www.secc.sydney



South Maroubra
EASTER BONNET PARADE
2018
11.00 am
Easter Saturday
31st MARCH

GREAT PRIZES
 for **Best Girl & Best Boy**
 plus a **Consolation Prize**

Easter Egg Hunt

Come and see the Easter Bunny

Cool Drinks for Everyone
refreshments for Mum & Dad

Ask mum & dad to help you start making your bonnet right now!!!

Lion's Club of Maroubra
Charity BBQ for the
Sydney Children's Hospital

Spablo!!!
the Sensational Clown

Walsh's Village Pharmacy

Cnr Malabar Rd & Meagher Ave South Maroubra
 All Enquiries - Richard Wahl Phone: 9311 9885
 www.walshsvillagepharmacy.com.au

FREE

Flower Power

Kids
Gardening Classes

11am Weekdays
Mon 16 - Fri 20 &
Mon 23 - Fri 27 April
 * Excludes Anzac Day Wed 25 April
 Kids under 5 must be accompanied by an adult.

Lets Eat!
A Rainbow of Food

Pot your own seedling to take home.

For more gardening advice, visit flowerpower.com.au



Registrations are now open.

Don't sit on the sidelines . . Join the fun!

Maroubra Saints Junior AFL Club is your local Auskick Centre. Our club fields mixed, boys and girls teams. from U5 through to U18. Join NOW.

Visit: www.maroubrasaints.com
 Email: maroubrasaints@gmail.com



Don't forget to follow us on Facebook and Twitter for more up to date and exciting news!!

<https://www.facebook.com/ChifleyPublicSchool>

<https://twitter.com/ChifleyPS>