



Mitchell Street
Chifley NSW 2036
Subscribe: <https://chifleyps.schoolzineplus.com/subscribe>

Email: chifley-p.school@det.nsw.edu.au
Phone: 02 9661 3014
Fax: 02 9661 6934



1 August 2018

Chifley Public School Vision

To empower our students and school community through opportunity and excellence.

Chifley Public School Mission Statement

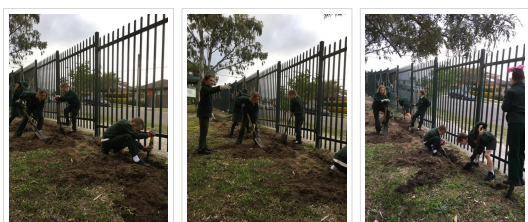
Chifley Public School is committed to the pursuit of excellence and the provision of equitable, high quality educational opportunities.

FROM THE PRINCIPAL'S DESK



Term 3 has started just as Term 2 concluded – enthusiastic and engaged students involved and doing their best at school, both in and out of class. A big well done to all our students and I am looking forward to another productive term, full of opportunity and success.

During the holiday we were busy working on the Mitchell St regeneration project. There's certainly more work to be done but our local native plants are starting to stabilise and soften the streetscape. The newly laid turf around our Memorial Garden and the Library will need some TLC in order to fully take so it's important that we all use the pathways – *please don't walk on me, I'm trying to grow!* Once again, an enormous thanks to Mr Dabron and Randwick City Council for all their hard work. It's very much appreciated.



NSW EDUCATION WEEK

NSW Education Week is an annual event held in the first week of August to celebrate public education across the state. It highlights the achievements of public education and local schools, putting the spotlight on students, educators and school communities. Education Week 2018 will be held from Monday 6th August, to Friday 10th August.

This year's theme is ***Today's schools – creating tomorrow's world***

The theme focusses on how public schools are preparing and equipping young people with the skills, the knowledge and the capabilities they need to lead and flourish in tomorrow's world.

The Chifley PS School Plan 2018-20 strategically targets building capacity around **innovative classrooms** and empowering our students as **inquisitive** and **adaptable** learners through future focussed teaching and learning outcomes that prioritise 4Cs:

- creativity;
- collaboration;
- communication skills; and
- critical thinking.

Within this framework:

- our students engage confidently and successfully with an information, communication and technology rich curriculum;
- Information Literacy is explicitly delivered by Mr Lewis as an integrated approach to classroom Project Based Learning;
- STEM classes are explicitly timetabled across the whole school to ensure all our students have access and opportunity to an inclusive, equitable and enriched curriculum; and
- learning technologies are utilised as an educational amplifier to demonstrate and communicate learning, and to consolidate, extend and enrich student outcomes.

Parents and carers are invited to join us for Education Week next week and be part of the wonderful learning opportunities available at CPS. Parent and carer involvement in school life is really important to us at CPS; it makes a significant difference to student outcomes and is actively encouraged.

Please note our Friday - Education Week assembly has been brought forward to 9:15am. The assembly will include a wide range of student performances and will be followed by Open Classrooms, 11:00-12:00.

Education Week activities include:

Monday 6th August

- Co-Curriculum – Percussion Group – 8:15am
- Book Fair – before and after school and during lunch times
- Co-Curriculum - Film Club Year 5&6 from 3-4pm

Tuesday 7th August

- Book Fair – before and after school and during lunch times
- Co-Curriculum - Didj Group – 8am
- Co-Curriculum - Sport Performance Clinic Netball Yr 3-6 – 8:15
- Co-Curriculum - Environmental Group – 8:15am
- Year 3 STEM – 2:00-3:00pm

Wednesday 8th August

- Book Fair – before and after school and during lunch times
- Co-Curriculum - Dance Group – 8:15am
- Co-Curriculum – Public Speaking 1:05pm-1:40pm
- Year 4 STEM – 2:00-3:00pm

Thursday 9th August

- Co-Curriculum - Aboriginal Dance Group – 8am
- Co-Curriculum - Choir - 8:15am
- Year 5 STEM – 1:40pm – 3:00pm

Friday 10th August

- Co-Curriculum - Drama – 8:15am
- Co-Curriculum – Sport Performance Clinic K-2 Motor Skills and Dance
- Co-Curriculum – Sport Performance Clinic Y3-6 Rugby League
- **Education Week Assembly** – 9:15am
- PSSA Netball & Rugby League 12:30-3:00pm
- **Open Classrooms** – 11:00am – 12noon
- Book Fair – before and after school and during lunch times

LEADERSHIP AWARDS

We were delighted that Matt Thistlethwaite was able to present our school leaders with 2018 School Leadership certificates at the end of last term. Congratulations to all our school leaders for their strong engagement across all aspects of school life and for setting a fabulous example throughout the school.



ATHLETICS CARNIVAL

The field events were held in Week 1 as part of the school Athletics' programme. Due to our amazing onsite sporting facilities we are able to split track and field events. This significantly increases the level of participation and opportunity across each discipline. Well done to the House Captains for their encouragement of each of the House groups and Congratulations to the students progressing to ESPSSA Zone Athletics Carnival, 20th and 21st August at ES Marks.



K-2 ATHLETICS



STUDENTS ACHIEVEMENTS

Congratulations to:

- The large number of students who joined me for the Good News Lunch at the end of last term. Well done and keep up the fabulous effort.



As Principal of Chifley PS, I strongly believe that education is a shared journey. My office door is always open if you would like to discuss any issue regarding your child's education.

David North
Principal
Chifley Public School

LIBRARY NEWS

PREMIER'S READING CHALLENGE



The 2018 Challenge closes **Friday 31**

August (midnight) for **students**. The Challenge gives students the chance to keep a personal log of all the books they have read throughout the year. It is also a valuable tool for encouraging students of Chifley Public School to spend more of their spare time reading.

- K-2 students have been experiencing PRC books in class and during library times. They do not need to enter these into their personal reading logs; this will be done for them prior to the completion of the challenge on September 1st.
- 3-4 and 5-6 students are encouraged to complete their own records online. They must read a total of 20 books. 15 books must be on the PRC booklist and 5 can be of their own choosing. Students will be given time during their allocated class library time to submit entries in their personal reading logs.
- Students that would like to enter books into their logs at home may do so by visiting the Premier's Reading Challenge website.

Students can log onto the website using their DET User IDs (Portal username) and passwords.

IMPORTANT LIBRARY EVENTS

Book Fair

Date: August 6-10 Week 3 (except for Thursday)

The book fair will be held in our school library. It will be open before and after school. Students will also have the opportunity to purchase books and browse through the book fair during lunch time.

Book Parade

Date: Wednesday 29 August 2018

Time: 9-11am

Students will be dressing up as their favourite book character. Each class shows off their costumes to the rest of the school.



Great Book Swap

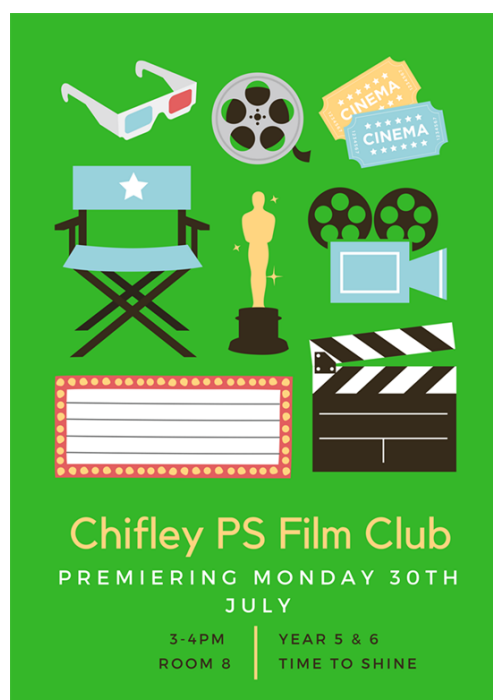
Time: 11.30am-1pm

Students will be participating in The Great Book Swap. All students have the opportunity to swap a book for another book. A gold coin is required to participate. All gold coin donations go to the Indigenous Literacy Foundation.



Co-Curricular

FILM CLUB



ABORIGINAL DANCE AND DIDJ GROUP

Our Dance and Didj Group performed at the La-Perouse Football Club NAIDOC Day at Yarra Oval during the school holidays.



They also gave a spectacular performance recently at Matraville High School.



A Reminder

- If you would like to be part of your child's class communication group, please email your class parent representative and please do not hesitate to contact me if you have any questions.
- If you are able to contribute as a school volunteer please contact your child's teacher, your class parent representative or the office. If you are not already doing so, a great way to start is involvement our reinforced reading programme each morning.

NATIONAL TREE WEEK

Students K-6 talked about the importance of trees and how to care for their environment.



Sports News

PSSA NETBALL

27 July

Chifley Senior B Netball Team played Daceyville and won 8/5

Chifley Junior B Netball Team played Daceyville and won 24/2

PSSA RUGBY LEAGUE

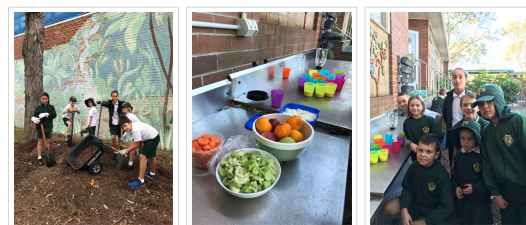
27 July

Chifley Junior Rugby League Team played South Coogee and lost 9-6

Chifley Senior Rugby League Team played Malabar and won 10-6

ENVIRONMENT TEAM

With the weather still cold the Environment Team on a Tuesday morning will be focussed on maintenance and getting the garden beds ready for some Spring planting. Our first compost bin is almost full so this organic waste, instead of going to landfill, will turn itself into compost over the coming months and help to add vital nutrients to our garden beds for our Summer fruits and vegetables. Any students, parents or carers are welcome to join us on a Tuesday morning from 8.15-8.45am.



This is one of 3 kookaburras who have taken up residence in our garden due to the new native garden plantings which is bringing back insects and now birds! This is a very healthy sign of a flourishing garden!



WAR ON WASTE

The second series of the War on Waste started this week on the ABC. Please see the link attached for details on how to watch the episode if you missed it and also season 1. The ABC website also has some easy ideas and small changes to our lifestyle that we can all make to have a positive impact on our environment. There are many ways for students and parents/carers to be involved.

From Week 2 at Chifley PS we will be introducing **"Waste Free Wednesday's"**. We are asking students, parents, cares and staff to reduce the amount of packaging that is in their lunchbox. Some examples might include:

- Encouraging students to eat more fruit and vegetables as this 'packaging' can go straight into the compost bin.
- Purchasing a lunchbox with separate containers for snacks and sandwiches. (After the initial cost of the lunchbox you will save money as these lunchboxes eliminate the need for plastic wrap on snacks and sandwiches)
- Using a refillable container for yoghurt (buying a larger container of yoghurt then packing a quantity in a smaller reusable container reduces the amount of plastic packaging and saves money)
- Pack a reusable spoon or fork that students take home rather than purchasing single use plastic spoons and forks
- Pack a refillable water bottle rather than buying plastic single use drink containers. Plastic drink bottles are one of the top two plastic contaminants found in the ocean. Juice popper packaging can be recycled but the straws attached to drink the juice cannot. Straws are too small for recycling equipment to process so unfortunately straws end up in landfill or the ocean. This plastic doesn't break down so all these straws stay on the planet forever.
- Reduce the amount of processed and plastic packaged foods put in lunchboxes. After the five week CSIRO Vegetable Study last term parents and carers might be surprised to know that the majority of students happily tasted unknown vegetables and found many that they enjoyed the taste of. Get students involved to help pack their snacks and lunch. Continue to encourage students to try new vegetables and fruit to get their healthy balance of 5 serves of vegetables and 2 serves of fruit every day.

http://www.abc.net.au/ourfocus/waronwaste/?utm_source=sfmc&utm_medium=email&utm_campaign=%3a125&user_id=796543d23a92cb0c4b53e1131566864e9c8e8e1696898489927153aada967f0c&WT.tsrc=email&WT.mc_id=Email%7c%7c125&utm_content=Story4_CTR

Thank you again to Mrs Grover and Mrs Morrell who have volunteered and are taking the soft plastic recycling from the school to the local supermarket for processing. We are asking for more volunteers to take a bag a week of this soft plastic for recycling as '*many hands make light work*'. Please see your class teacher or class parent rep if you are able to help.



**Thank
You!**

Our toothbrush, toothpaste and packaging recycling program will continue into Term 3. Please place these used items in the container outside Room 13.



Thanks to a grant from the Litter Legends Program we were able to purchase the new recycling bins for the classrooms. Our school goal on recycling is to reduce the amount of waste going into our red lidded landfill bins. The council collect approximately 500kg of waste every week from our school that is going straight to landfill. Much of this waste is recyclable. Already there is a noticeable difference just by composting our fruit and vegetable scraps. Our goal is to reduce this amount of waste by 25% by the end of term 3 and then to halve our waste by the end of the year. Our recycling is an ongoing whole school program but its success will be maximised if the whole school community participates and takes on the challenge to reduce, reuse and recycle their waste.

If any parents, carers or students would like to be a part of the Eco-Action Team or have any suggestions to help minimise waste at Chifley Public School please see Mrs Jreige.



Say NO to plastic water bottles

Did you know that bottled water isn't subject to as stringent testing as tap water? In fact, it could be worse for your teeth. Plus, it's estimated to take between 450-1,000 years for a plastic water bottle to break down. That's a whole lot of plastic waste sitting in landfill!
#BYOWaterBottle

Why a reusable water bottle?

1. Most importantly, **REDUCE WASTE!** To give you a visual, there is currently enough plastic water bottle waste to wrap around the earth 190 times!
2. Bottled water is **NOT** better than tap water.
3. Save money! The main cost of bottled water comes from producing the vessel itself.

At Chifley Public School we encourage all students and staff to bring reusable water bottles to school and refill them with water as needed.

RANDWICK CITY COUNCIL RECYCLING INCURSION

At the end of last term, Randwick City Council came in to teach K-6 students about recycling and where landfill goes from the bins with the red lid.



Kindergarten: Scientists & Engineers

These are a few more awesome toys that were made by our talented Kindy kids!



STAGE 1 MATHS

Stage 1 Maths Groups: Learning about position using a treasure map.



TELL THEM FROM ME SURVEY

Tell Them From Me student survey
Frequently Asked Questions (parents and carers)
 Centre for Education Statistics and Evaluation

1. What is the Tell Them From Me student survey?

The Tell Them From Me student survey asks questions about factors that are known to affect academic achievement and other outcomes. It aims to help improve the learning outcomes of students. The survey is designed to measure, assess and report insights from the student point of view at the school and system levels. The focus of this NSW survey is on student wellbeing, engagement and effective teaching practices.

2. What kind of questions will the survey ask?

The survey questions relate to the following measures for **primary schools**

Participation in sports and extra-curricular activities	Behaviour at school	Effective learning time
Use of ICT for learning	Homework behaviour	Teaching relevance and rigour
Sense of belonging	Interest and motivation	Perseverance
Positive relationships	Effort	Experience of being bullied
Valuing school outcomes	Skills and learning challenge	Advocacy at school
Positive teacher-student relations	Expectations for success	Positive learning climate

The survey questions relate to the following measures for **secondary schools**:

Participation in sports and extra-curricular activities	Homework behaviour	Expectations for success
Skills and learning challenge	Academic self-concept	Behaviour at school
Experience of being bullied	Truancy	Sense of belonging
Interest and motivation	Effective learning time	Aspirations: finishing Year 12, University, TAFE
Positive relationships	Effort	Teaching relevance and rigour
Wellness	Valuing school outcomes	Positive learning climate
Academic buoyancy	Advocacy at school	Advocacy outside school
Positive teacher-student relations	Use of ICT for learning	Perseverance

3. How have schools been selected to take part?

The survey is open to all NSW government schools at no cost to them. Your child's school has decided to participate.

CENTRE FOR EDUCATION STATISTICS AND EVALUATION

WWW.CESE.NSW.GOV.AU

ARCHIBULL AT STATE PARLIAMENT HOUSE

Our Students recently attended State Parliament House, where the cow that they designed last year is being displayed.



SCHOOL ASSEMBLY NEWS

School assemblies in Term 3 will be held on Fridays from 10-10:30am in the hall.

Week 2	8 August	Athletics Ribbons
Week 3	10 August	9:15am start - Education Week
Week 4	17 August	Artist of the Term
Week 5	24 August	Percussion performance
Week 6	31 August	No Assembly
Week 7	7 September	Writer of the Term
Week 8	14 September	Choir performance
Week 9	21 September	Drama performance
Week 10	26 September – Wednesday	Naidoc – Didj & Dance performance time to be advised

THANK YOU

A very big thank you to Angeline's parents who are hosting our Year 6 Formal Graduation Dinner at their Restaurant, Green Olive Café & Restaurant, at the end of the year. Thank you so much for your support.



If you are looking for a great place to eat or to grab a coffee, we highly recommend the Green Olive Café & Restaurant; you will find them at 1 Pine Avenue, Little Bay. They are open Monday & Tuesday 7am – 5pm, Wednesday to Saturday from 7am until late and Sundays from 8am until late.

GROW YOUR MIND



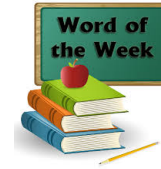
Which strength can you call on to help you today?



Wellbeing tips:

1. Get to know your five top strengths.
2. Use them during challenging moments e.g. I need perseverance to help me finish my work, I need patience to help me to keep my Guard Dog small...

WORD OF THE WEEK



Word of the Week takes place in classes 1-6. It is an explicit approach to vocabulary development and is integrated into the writing process. Years 1 & 2 select their best word as a group lesson.

Class	Word W9	
1/2K	Fetch	
1/2J	Expressed	
Class	Word W9	Student
3S	Resilient	Chyana H
4C	Soil	Jaiah M
5S	Contrary	Lola H
6W	Allure	Sascha C

FROM THE OFFICE

LUNCH ORDERS

Please ensure that you have your lunch order written on a paper lunch bag with your child's name, class and correct amount of money inside the bag. All lunch orders must be handed in to the office before 9:30am. **Please note that Pizza Day Lunch Special has increased to \$5.00.**



PAYMENTS

Cash and cheque can be sent to school and given to your class teacher or can be directly dropped off at the office. If paying by cash please send the exact amount. Eftpos payments can also be made at the office.

The preferred method of payment is Parent Online Payments through our school website. Parent online payments (POP) provide parents and school debtors with a **secure** payment facility to deposit into the school's account via a credit or debit card. The payment portal is accessed via the school's website and allows parents to pay using either a Visa or MasterCard credit or debit card.

Please visit our school website below and click on "Make a payment". Once you fill out the payment details, you have an instant receipt. It is a safe and secure way to pay for school fees, performances and excursions.

<http://www.chifley-p.schools.nsw.edu.au/>

NEW ENROLMENTS FOR KINDERGARTEN 2019

If any families are intending to enrol siblings for 2019, please come to the office and collect an enrolment form. It is never too early to get all the paperwork started. If you know any families that intend to enrol for next year, please encourage them to start the process as soon as possible in order to assist with orientation arrangements.

P&C NEWS

MONDAY 6 AUGUST

Our next School Council meeting will be held at 6:00pm followed by the P&C meeting at 6:30pm in the library.

YMCA OOSH NEWS



YMCA Little Bay COS OSHC

Available at
Chifley Public Schools

The YMCA is a childsafe organisation, we acknowledge that we are living our safety value for children and young people.

Before + After School Care

We value and respect parents as partners in the care and education of children. Our program follows the National Quality Framework, offering a range of exciting activities that encourages independent learners.

ENROL today to secure your child's place!
ymcansw.org.au/littlebay

0407 184 899 - 0437 804 871
oshc.littlebay@ymcansw.org.au

YMCA NSW
EMPOWERMENT/HEALTHY LIVING/SOCIAL IMPACT

SAFECOUNCIL OF AUSTRALIA

YMCA

COMMUNITY NEWS

Our Services

Our main focus areas are:-

- Domestic Violence Issues
- Parenting & Children's Services
- Family Support

We offer:-

- Domestic Violence Counselling
- General Counselling (Individual)
- Supported Playgroup Service
- Parenting Advice & Support
- Education
- Information
- Advocacy
- Referrals
- Resources
- Assessments
- Casework
- Groups/Workshops
- Court Support
- Professional Clinical Supervision for Workers (DV Specialist)


The Deli has been established since 2019 providing services to the community. The Deli Women & Children's Centre Inc. is a non-profit community based organisation funded by Family and Community Services and is managed by members from the local community.

The Deli Women & Children's Centre

STAFF AT THE DELI
Manager-Vicki
Email: manager@thedeli.org.au
Centre Administration-Jennifer
Email: admin@thedeli.org.au

Counselling & Family Support Service
Monday-Friday 9am-4.30pm
Counsellor/Caseworker- Juliette, Stefanie and Jennymie
Email: counselling@thedeli.org.au

Parenting & Children's Services
Monday-Wednesday 9am-2.30pm
Children's Services Team- Rosa & Jennifer
Email: childservices@thedeli.org.au



Program for Term 3, 2018
23/7/18-28/9/18

Office Hours:
Monday-Friday
9.00am-3.00pm

Telephone: (02) 9667-4664
Facsimile: (02) 9669-5538

Website: www.thedeli.org.au
Email: admin@thedeli.org.au



Playgroups & workshops for families Term 3 2018 **FREE**



For families with a child aged 0-3 years: Little Leaps Playgroup Every Friday during school term, 10am-11.30am, La Perouse Public School, cnr Yarra & Bunnerong Rd, La Perouse.



For children starting school in 2019: Transition to School Playgroup Every Monday in Term 3, from 10-11.30am. Starts 30 July. Lifestart at Chifley Public School, Mitchell St, Chifley.



For single parents: Support Group - Six-workshop series on strategies for building stronger relationships. Expert speakers and the chance to network with other single parents. Thursdays - 2, 9, 16, 23, 30 August & 6 September, 10am-12pm, at Hope Uniting Church, Anzac Parade, Maroubra



For parents: Community Kitchen - Cooking & nutrition class. Hands-on class with expert nutritional advice. Wednesdays during school term from 10am-12pm at La Perouse Public School, cnr Yarra & Bunnerong Rd, La Perouse (childminding available).



Building relationships through play - Talk about fun, effective parenting at Lionel Bowen Library, Maroubra, Wednesday 12 September, 10am-12pm.

Bookings and queries: phone 9349 8200 or email familysupport@jnc.org.au

Find us on www.jnc.org.au Facebook: TheJNC



Chifley Public School

Located in the School hall (entry via Burke St)

10.00am-12.00pm
Thursdays
During School Terms
\$3 per session & a piece of fruit
Enquiries: (02) 8338 8502

Supported Playgroups

Supported playgroups aim to empower families to support young children's development through participation in a variety of developmentally appropriate play. Supported playgroups are led by qualified early childhood educators and allow families to participate in a range of new activities and experiences.

Our staff are qualified in Blue Book assessments, key word signing, active play and healthy nutrition as well as guest speakers coming regularly. We also have a family worker who attends all our playgroups, if you need that little bit of extra help.

To enquire please contact our Family Support Team on (02) 8338 8506 or email familysupport@secc.sydney

www.secc.sydney



South Eastern
Community
Connect



familiesnsw
supporting families to raise children

BECOME A VOLUNTEER HOST FAMILY



CAN YOU HOST ME?

EMAIL SYLVIAKELLY@WEP.ORG.AU
 CALL 1300 884 733
 SMS 'HOST' TO 0428 246 633

"If you're thinking about hosting, do it! It's the most rewarding experience for your family. Our daughter has a sister now, someone to talk to other than mum or dad."
 Nicole, three-time host mum.



ALESSIA B

Ciao from Italy! **17 from Italy**
 My fascination with other cultures led me to enroll into a school focused on foreign languages. I like to keep active and I have also been practising artistic gymnastics for over ten years.
 I can't wait to immerse myself into the Australian culture and I am very grateful to you for giving me the opportunity to do so.

WEP IS LOOKING FOR FAMILIES TO JOIN OUR COMMUNITY OF WONDERFUL VOLUNTEER HOST FAMILIES.

HOST A HIGH SCHOOL EXCHANGE STUDENT!

IF YOU HAVE AN INTEREST IN OTHER CULTURES, WE WOULD LOVE TO HEAR FROM YOU! REMEMBER, SOMETIMES THE GREATEST REWARDS IN LIFE COME FROM DOING THINGS YOU NEVER THOUGHT YOU WOULD!

CONTACT WEP ON 1300 884 733 FOR MORE INFORMATION OR EMAIL INFO@WEP.ORG.AU.

**MORE PROFILES
 AVAILABLE AT
WEP.ORG.AU/HOST**

Don't forget to follow us on Facebook and Twitter for more up to date and exciting news!!

<https://www.facebook.com/ChifleyPublicSchool>

<https://twitter.com/ChifleyPS>