



Mitchell Street
Chifley NSW 2036
Subscribe: <https://chifleyps.schoolzineplus.com/subscribe>

Email: chifley-p.school@det.nsw.edu.au
Phone: 02 9661 3014
Fax: 02 9661 6934



30 August 2018

Chifley Public School Mission Statement

Chifley Public School is committed to the pursuit of excellence and the provision of equitable, high quality educational opportunities.

FROM THE PRINCIPAL'S DESK



SHOWCASE

At Chifley PS we recognise the importance of holistic educational outcomes for our students. Within this context, significant emphasis is placed on the Performing Arts through both our core classroom programmes and co-curricular activities. An enormous

well done to our K-6 school choir and the Hip Hop group who recently performed at Showcase, and thank you to Miss Carroll and Miss Mitchell for supporting the students on the night and ensuring that our students are exposed to opportunities to display their talents and enthusiasm for the Performing Arts.

SCHOOL ATTENDANCE

Regular school attendance is a core school responsibility. The positive impact of being on time and at school every day cannot be over emphasised. The Education Act 1990 requires that parents ensure their compulsory school aged children regularly attend school. On occasion, your child may need to be absent from school. Justified reasons for student absences may include:

- being sick or having an infectious disease;
- having an unavoidable medical appointment;
- being required to attend a recognised religious holiday; or

- exceptional or urgent family circumstances e.g. attending a funeral.

Parents must provide an explanation for absences to the school within 7 days from the first day of any period of absence. Where an explanation has not been received within the 7-day timeframe, the school will record the absence as unjustified on the student's record.

As a reminder:

- core literacy times across all K-6 classes start at 9am with reinforced reading.

Please contact me if you have any questions and/or refer to the NSW DoE School Attendance Policy.

TELL THEM FROM ME PARENT SURVEY

This Term, CPS will be participating in the *Partners in Learning* parent survey, another part of the *Tell Them From Me* suite of surveys (student, teacher and parent surveys) on student engagement. The survey asks parents and carers questions about different factors that are known to impact on student wellbeing and engagement.

Running this survey will help our school understand parents' and carers' perspectives on their child's experience at school. These include: communication between parents/carers and staff, activities and practices at home and parent/carer views on the school's support of learning and behaviour. This valuable feedback will help our school make practical improvements.

The survey is conducted entirely online on smartphones, ipads, tablets, laptops or computers. The survey will typically take 15 minutes or less to complete and is completely confidential. The parent survey will be conducted between 27 August and 26 October. Although participating in the survey is entirely voluntary, your responses are very much appreciated.

More information about the survey is available at:

<http://surveys.cese.nsw.gov.au/>

To access the survey for our school go to:

<https://nsw.tellthemfromme.com/k86x8>

I urge all our families to participate in the parent survey. The greater the response the more valid the data.

We had a very successful evacuation drill last week where we practiced safely evacuating the school in case of an emergency.



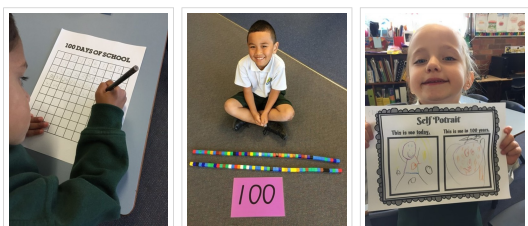
As Principal of Chifley PS, I strongly believe that education is a shared journey. My office door is always open if you would like to discuss any issue regarding your child's education.

David North
Principal
Chifley Public School

KINDERGARTEN NEWS

KINDERGARTEN CELEBRATES 100 DAYS OF SCHOOL!

Congratulations to our amazing Kindy students who recently celebrated their 100th day of school. Students, buddies and teachers had a wonderful day engaging in themed activities and playing games based around 100.



Our wonderful Kindergarten students and their families completed a 100th day project at home. They created fantastic pictures or constructions using 100 objects. The students presented their creative and imaginative works to the class.



We are very proud of everything our Kindergarten students have achieved in just 100 days and look forward to seeing what they will do in the next 100!



CREATIVE WRITING

This is Charlotte, sounding out the words, she wrote a lovely note to Mr North. "My boss is the principal and his name is Mister North. He is the principal and I love him!"

Thank you Charlotte!



ARTIST OF THE TERM



Take a look at some of these incredible dot pictures created by some of our Year 6 students, the detail is incredible. Look out for more of these works of art in future newsletters.

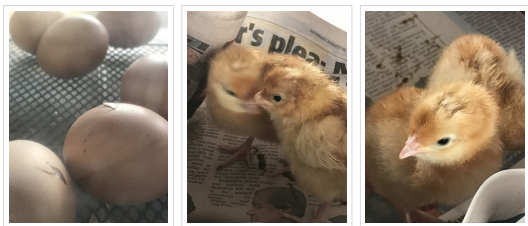


CHICKEN HATCHING PROGRAM

K-2 this term are studying the Living World in Science. Students are learning to describe external features, changes in and growth of living things and describe ways that different places in the environment provide for the needs of living things.

The chick hatching program gives students a hands on insight into the lifecycle of a chick. Students have watched eggs

incubating, the chicks pipping (slowly pecking their way out of the shell) and watching the newly hatched chicks. Students are learning about the needs of chicks and observing their growth.



WASTE FREE WEDNESDAY

Each Wednesday students are encouraged to think about the packaging used for their recess and lunch and come up with ways to produce zero waste.

In 1/2J students, parents and carers are packing their food with reusable containers and minimising their waste. Well done to Kathy, Elise, Elodie, Alex, Kingsley, Luke, Luc, Shiana, Mia, Jeniver and Viktor who all had zero waste in their lunch box. The rest of the class all had packaging that could either be recycled or composted. For the last two Waste Free Wednesday's the only waste for landfill from 1/2J has been two straws. 1/2J would like to challenge all the other classes at Chifley to reduce the amount of rubbish that that goes straight to landfill.

GARDEN

Wow, look how beautiful the grass is growing!!! Thank you everyone for staying off the grass and giving it time to grow. It looks fantastic!



STUDENT ACHIEVEMENTS

Congratulations to:

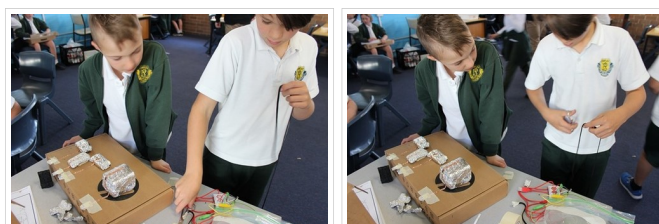
- The CPS athletics team who competed at the ESPSSA Zone Athletics Carnival. Your effort, achievements and conduct was exceptional. A very special mention goes to Ethan B, Kylar V and Alexandra J who have gone on to represent Eastern Suburbs ESPSSA at the regional carnival at Homebush Bay in September. We wish them all the best.
- Congratulations to all our Artist of the Term recipients. Just some of the fantastic artists we have here at Chifley Public School.
KH – Leeton I, 1/2J – Viktor S, 1/2K – Zach N, 3S – Emily A, 4C – Toby G, 5S – Heidi B, 6W – Zachary M
- Kindergarten on their first 100 days at school.

- Mrs Tyler's percussion group for their fabulous performance at our Week 5 assembly.
- The Chifley PS community for raising an astounding \$667.80 for our drought-stricken farmers in the P&C's 5c Challenge. And, an amazing effort counting all the coins!

STEM

This term Stage 2 students are using an invention kit called a Makey Makey. With this device, students can turn everyday items into a computer keyboard. During STEM lessons, students have been given the challenge to create a game controller or a piano that can be used by a kindergarten student. *For more information about the Makey Makey check out the official website.*

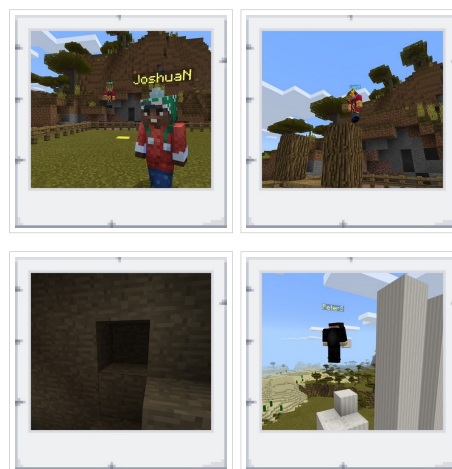
<https://makeymakey.com/>



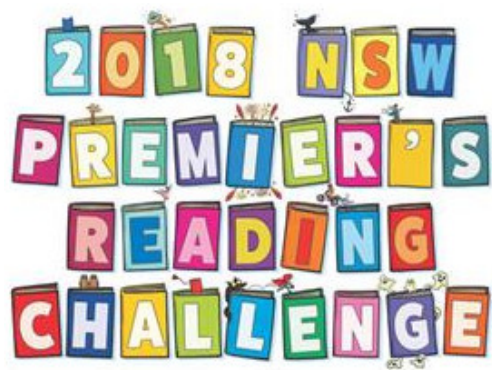
LIBRARY NEWS

This term Stage 2 and Stage 3 students have started to use Minecraft Education Edition during library lessons. Students in Year 5 and 6 are researching a structure built by an ancient civilisation. They are currently constructing their own version of the structure using the Minecraft software. Students in Years 3 and 4 are attempting to reconstruct Captain Cook's famous ship the Endeavour. For more information on Minecraft Education Edition check out the official website.

<https://education.minecraft.net/>



PREMIER'S READING CHALLENGE



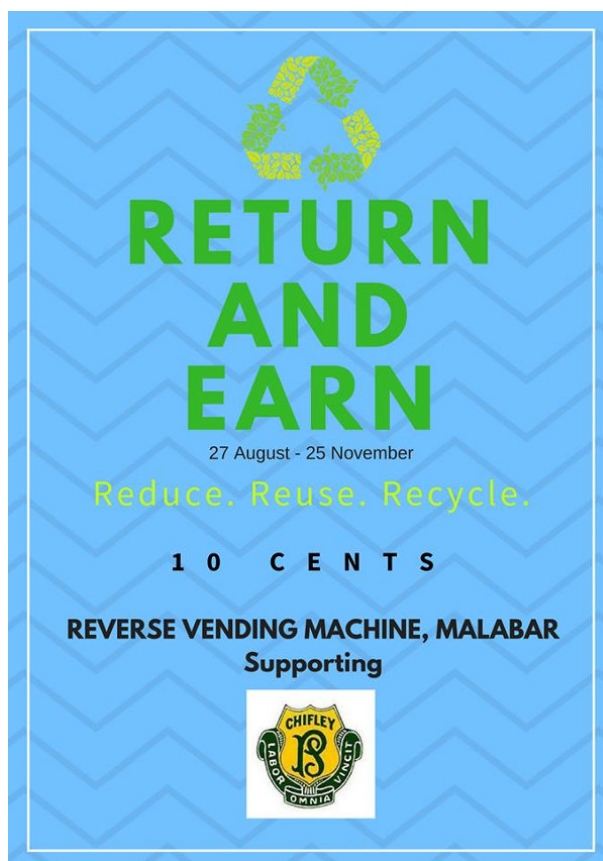
The 2018 Challenge closes **Friday 31 August** (midnight) for **students**. The Challenge gives students the chance to keep a personal log of all the books they have read throughout the year. It is also a valuable tool for encouraging students of Chifley Public School to spend more of their spare time reading.

- K-2 students have been experiencing PRC books in class and during library times. They do not need to enter these into their personal reading logs; this will be done for them prior to the completion of the challenge on September 1st.
- 3-4 and 5-6 students are encouraged to complete their own records online. They must read a total of 20 books. 15 books must be on the PRC booklist and 5 can be of their own choosing. Students will be given time during their allocated class library time to submit entries in their personal reading logs.
- Students that would like to enter books into their logs at home may do so by visiting the Premier's Reading Challenge website.

Students can log onto the website using their DET User IDs (Portal username) and passwords.

RETURN AND EARN

Chifley Public School will be featured on the Return and Earn Reverse Vending Machine from Monday 27th August through to November 25th at Malabar, Randwick Golf Club. We'd love you to share this post with friends and family so they too can support our wonderful school.



A Reminder

- If you would like to be part of your child's class communication group, please email your class parent representative and please do not hesitate to contact me if you have any questions.
- If you are able to contribute as a school volunteer please contact your child's teacher, your class parent

representative or the office. If you are not already doing so, a great way to start is involvement our reinforced reading programme each morning.

- To improve safety controls around our school, Randwick City Council has advised that they will be undertaking work to install a 50m zone "P10 8:30am – 9:30am and 2:30pm – 4:00pm School Days Only" on the south side of Burke St starting 76m east of Mitchell St.

ENVIRONMENT REPORT

COLGATE COMMUNITY GARDEN CHALLENGE

Thank you to all those families who have donated their used toothbrushes and toothpaste tubes for recycling. To earn extra points for our school in the challenge simply follow the link below and vote for Chifley Public School.

<https://www.terracycle.com.au/en-AU/contests/colgategarden-voting>

Please continue to drop your oral care waste in the box outside Room 13. The challenge continues until October 31st.



WAR ON WASTE

Food, food, glorious food! We all love eating it, but just how much are we throwing out? Each year Australians discard up to 20% of the food they purchase. This equates to 1 in every 5 shopping bags going straight into the bin and wasting approximately \$1,036 for the average household.

So why is this food waste so bad for our environment? When food rots with other organics in landfill it gives off a greenhouse gas called methane, which is 25 times more potent than the carbon pollution that comes out of your car exhaust. Plus, when you throw out food, you also waste the water, fuel and resources it took to get the food from the paddock to your place.

What can you do?

- Shop smarter and make a meal plan. This way you only buy exactly what you need for the week, plus you save money
- Shop local and seasonal. If it's grown locally, it minimises the distance the food travels before it reaches your plate

- If you know you're not going to eat something whack it in the freezer for another day
- Implement Meat Free Monday and go one day a week without eating meat. By doing this you'll be reducing greenhouse gas emissions
- In the pantry, know the difference between 'best before' and 'use-by' dates. A 'best before' date is simply an indication of when the food is at it's best. Many dried and packaged food are fine to eat after this time.

Find out more:

http://www.foodwise.com.au/foodwaste/household-food-waste-landing-page/?utm_source=sfmc&utm_medium=email&utm_campaign=%5btv_sfmc_30_07_18_war-on-waste_df_in1%5d%3a125&user_id=796543d23a92cb0c4b53e1131566864e9c8e8e1696898489927153aada967f0c&WT.tsrc=email_l&WT.mc_id=Email%7c%5btv_sfmc_30_07_18_war-on-waste_df_in1%5d%7c125&utm_content=WOW_hero_CTA

KITCHEN GARDEN

The Stage 1 science program is integrated with the Stephanie Alexander Kitchen Garden Program. Stage 1 have been learning about plants as living things and their needs in the environment. Students have been exploring the garden and planting vegetable and herb seeds. In the kitchen students have been learning about fruit including bananas and apples. Students have learnt where bananas are grown and how apples are grown and harvested. Students enjoyed banana smoothies and mini apple pies that they helped make.



JUMP ROPE FOR HEART

CHIFLEY PUBLIC SCHOOL'S COMMUNITY FUNDRAISER THIS YEAR IS FOR THE HEART FOUNDATION THROUGH THE JUMP ROPE FOR HEART PROGRAM. OUR FUNDRAISING GOAL IS \$2000.00

Jump Rope for Heart kicks off this term! Weeks 4-10

Jump Rope for Heart is a fantastic physical activity and fundraising program that has been run by the Heart Foundation for 35 years. It's a great way for your child to keep fit and learn new skills, but it also helps raise funds for vital heart research and education programs.



Since Jump Rope for Heart started in 1983, schools like ours have raised more than \$75 million for the Heart Foundation’s lifesaving work.

It’s important you register your child online, so they can receive the full benefits of the program and participate in online fundraising, simply follow the link below to get started.

https://jumprope.heartfoundation.org.au/2018/Chifley_Public_School_-_CHIFLEY_NSW_-_137591?utm_medium=Email&utm_source=ExactTarget&utm_campaign

or

<https://jumprope.heartfoundation.org.au/register>

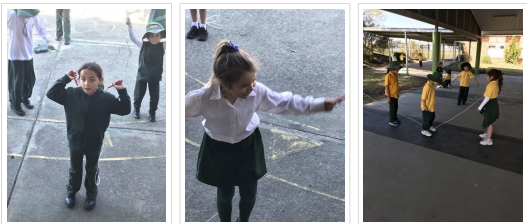
Students K-2 will be skipping Tuesday and Thursday after lunch and during sport on Friday. Students 3-6 will be skipping throughout the term in PE lessons. K-6 will also have the opportunity to skip during their lunch break. During this time you can share student’s online fundraising page with family and friends to help raise money for this great cause.

We will hold our school Jump Off Day on *Friday, 21st September (Week 9)*. This will mark the end of the program and is a chance for everyone to come together to skip and show off their newly learned skills.

Thank you for supporting the Jump Rope for Heart program!

Heart Foundation

Jump Rope for Heart



1/2J WRITING

1/2 J Writing

Persuasive – Why We Should Have Gardens

Gardens are good for us because they give us oxygen from the plants. We can grow plants by using seeds. We put the seeds in good soil so they can grow. We use water to give the plants water to drink and grow. I feel fantastic that we have a garden because we have fresh air. If you grow a vegetable garden you will have lots of vegetables. If you’re playing outside and fall over you won’t get hurt because you landed on the grass.

By Shiana

Gardens help us live because they have food. Without food we would not live. We also need bees because without bees we would have no gardens which means no food. We also need water because plants need water otherwise they would dry up. It’s also good to have compost because that helps the soil and plants need soil otherwise it would fall over.

By Alex



1/2J CLASS PET

As part of our Science topic of Living World this term 1/2J have five new goldfish in their class. Students are learning to be responsible to look after a pet and learning about the environment of a fish and its needs as a living thing.

Through a class vote the names of our five fish are: Michael Jackson, Naomi, King Bubbles, Gold Guy (the little one) and Sophie Marshall.



STAGE 1 MATH

In Math’s groups this week Stage 1 students were learning about Volume and Capacity through hands on activities. Students worked in groups to estimate the volume and capacity of different sized and shaped containers, then worked out the actual volume and capacity and then recorded their results.



FRUIT AND VEG FAMILY CHALLENGE



Did you know?
Only 1 in every 20 Aussie children (and adults!) are eating enough fruit and vegetables.

Family Challenge

What can you do to help your kids eat more fruit and veg?

Children eat more fruit and vegetables when parents eat them, and when they are readily available and accessible at home.

We know that the more fruits and vegetables you offer your family, the more likely they are to eat more. So, this Fruit & Veg Month, we challenge your family to get adventurous. Introduce a new fruit or vegetable each week of the month of September. Let us know about it and be in the running for a great prize pack!

Get happy with fruit & veg this September!

Don't be discouraged!
You may have to put a new fruit or vegetable on the table many times before it becomes a family favourite.

Keep it relaxed...
Forcing kids to try foods will backfire. Keep mealtimes positive and encourage your kids to try the new foods and dishes. Use descriptive praise and non-food rewards. Try things like stickers, a later bed time or a post-meal family game.

Cost and availability an issue?
Frozen, canned and dried fruits and vegetables are all good alternatives. Look for products without added salt, fat or sugar.



Fruit & Veg Month



Fruit & Veg Month 2018

Our school has registered for Fruit & Veg Month 2018. The theme for this year is 'Happy Fruit & Veg'tember!'

Fruit & Veg Month 2018 runs for the last 4 weeks of Term 3, Monday 3rd to Friday 28th September.

As part of Fruit & Veg Month, students will be involved in various classroom and school based activities which encourage them to eat more fruit and vegetables.

Fruit & Veg Month 2018 – 'Happy Fruit & Veg'tember!' Family Challenge

As part of Fruit & Veg Month, Healthy Kids Association has partnered with Harvey Norman, Foost, and Harris Farm Markets for this year's family challenge.

Only 1 in 20 Aussie children (and adults!) are eating enough fruit and vegetables. So, this Fruit & Veg Month, we challenge families to get adventurous! Include a new fruit and vegetable each week over the month of September and let us know how you went.

There are three prize packs to be won. Each pack is valued at over \$350 RRP and includes a Breville Searing Slow Cooker, Foost healthy shopping pack (including a trolley bag, reusable shopping bags, meal planner and shopping planner) and Harris Farm Markets vouchers.

Go to the Fruit & Veg Month webpage (www.fruitandvegmonth.com.au) and click on the link to the Happy Fruit & Veg'tember Family Challenge webpage for more information and entry details.

SCHOOL ASSEMBLY NEWS

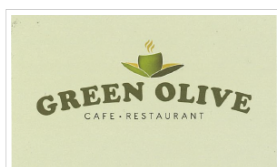
School assemblies in Term 3 will be held on Fridays from 10-10:30am in the hall.

Week 6	31 August	No Assembly
Week 7	7 September	Writer of the Term
Week 8	14 September	Choir performance
Week 9	21 September	Drama performance
Week 10	26 September – Wednesday	Naidoc – Didj & Dance performance time to be advised

THANK YOU

A very big thank you to Angeline's parents who are hosting our Year 6 Formal Graduation Dinner at their Restaurant, Green Olive Café & Restaurant, at the end of the year. Thank you so much for your support.

If you are looking for a great place to eat or to grab a coffee, we highly recommend the Green Olive Café & Restaurant; you will find them at 1 Pine Avenue, Little Bay. They are open Monday & Tuesday 7am – 5pm, Wednesday to Saturday from 7am until late and Sundays from 8am until late.



GROW YOUR MIND

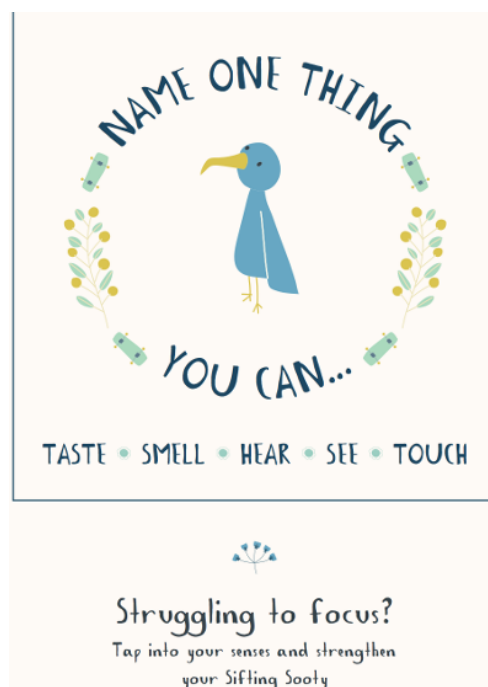


We have a lot of distractions around us. Try noticing when your thoughts are drifting away from what you are meant to be doing.

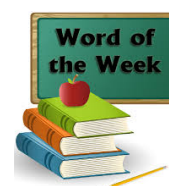
WELLBEING TIP:

Really cannot focus, but want to?

#1: Name one thing you can taste, smell, hear, see and touch. This will bring you back into the present moment and allow you to regain your focus.



WORD OF THE WEEK



Word of the Week takes place in classes 1-6. It is an explicit approach to vocabulary development and is integrated into the writing process. Years 1 & 2 select their best word as a group lesson.

Class	Word W5
1/2K	Incredible
1/2J	Demanded

Class	Word W5	Student
3S	Adoration	Ryder H
4C	Bright	Mase A
5S	Gruesome	Indianna J
6W	Rubberneck	Sascha C

TELL THEM FROM ME

THE TELL THEM FROM ME PARENT SURVEY (TERM 3, 2018)

Parent FAQ document for the parent survey:

The following additional document explains the Tell Them from Me parent survey in greater detail:

http://surveys.cese.nsw.gov.au/images/FAQs/TTFM_Parent_Survey_FAQs_Parent_and_Carers_T32018.pdf

This Term, our school will be participating in the *Partners in Learning* parent survey, another part of the *Tell Them From Me* suite of surveys (student, teacher and parent surveys) on student engagement. The survey asks parents and carers questions about different factors that are known to impact on student wellbeing and engagement.

Running this survey will help our school understand parents' and carers' perspectives on their child's experience at school. These include: communication between parents/carers and staff, activities and practices at home and parent/carer views on the school's support of learning and behaviour. This valuable feedback will help our school make practical improvements.

The survey is conducted entirely online on smartphones, ipads, tablets, laptops or computers. The survey will typically take 15 minutes or less to complete and is completely confidential. The parent survey will be conducted between 27 August and 26 October. Although participating in the survey is entirely voluntary, your responses are very much appreciated.

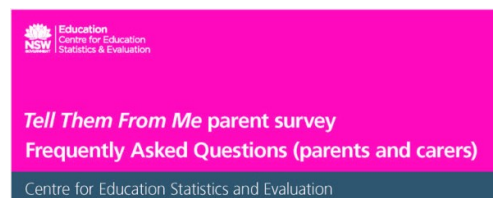
More information about the survey is available at:

<http://surveys.cese.nsw.gov.au/>

To access the survey for our school go to:

<https://nsw.tellthemfromme.com/k86x8>

We look forward to you completing the parent survey by accessing the link above.



1. What is the Partners in Learning parent survey?

The Partners in Learning parent survey is part of the Tell Them From Me suite of surveys on student engagement. The parent survey helps to clarify and strengthen the important relationship between parent and school. The survey is designed to measure, assess and report insights from the parent point of view at the school and system levels. The focus of this NSW survey is on student wellbeing, engagement and effective teaching practices.

2. What kind of questions will the survey ask?

The survey questions aim to understand parents' perspectives on their child's experience at school, including teaching, communication and the school's support of learning and behaviour. The survey also aims to understand parents' perspectives on activities and practices at home related to their child's learning.

The survey will ask parents questions about:

Parents feel welcome	Parents are informed	Parents support learning at home
School supports positive behaviour	Safety	Inclusion
Communication preferences	Parents' participation at school	School supports learning

3. How have schools been selected to take part?

The survey is open to all NSW government schools at no cost to them. Your school has decided to participate.

4. How will taking part in this survey benefit my child's school?

The parent survey provides school principals and school leaders with parents' perspectives on their school as well as learning at home. Communication between parents and staff, activities and practices at home, and parent views on the school's support of learning and behaviour help build an accurate and timely picture that schools can use for practical improvements. Data collected from the survey responses are quickly compiled into reports for school leaders. Principals can then use this information to help them identify emerging issues and plan for school improvement.

5. How does the parent survey relate to the student survey?

The parent survey is complementary to the Tell Them From Me student survey that your child may have been asked to complete. These surveys are offered along with a teacher survey to ensure schools can capture the views of students, teachers and parents.

For more detail on each of the surveys, see the survey website: <http://surveys.cese.nsw.gov.au/>

6. What do I need to do to participate in the survey?

The survey typically takes 15 minutes and is conducted entirely online through a secure website operated by the survey developers, The Learning Bar. You can complete the surveys on desktop computers, laptops, pads, tablets and smartphones. You will be provided with a link to complete the survey at home or your school may make computers available so that you can complete the survey during school hours. This link will be distributed to you by your school during Term 3.

FROM THE OFFICE

LUNCH ORDERS

Please ensure that you have your lunch order written on a paper lunch bag with your child's name, class and correct amount of money inside the bag. All lunch orders must be handed in to the office before 9:30am.



PAYMENTS

Cash and cheque can be sent to school and given to your class teacher or can be directly dropped off at the office. If paying by cash please send the exact amount. Eftpos payments can also be made at the office.

The preferred method of payment is Parent Online Payments through our school website. Parent online payments (POP) provide parents and school debtors with a **secure** payment facility to deposit into the school's account via a credit or debit card. The payment portal is accessed via the school's website and allows parents to pay using either a Visa or MasterCard credit or debit card.

Please visit our school website and click on "Make a payment". Once you fill out the payment details, you have an instant receipt. It is a safe and secure way to pay for school fees, performances and excursions.

<https://chifley-p.schools.nsw.gov.au/>

NEW ENROLMENTS FOR KINDERGARTEN 2019

If any families are intending to enrol siblings for 2019, please come to the office and collect an enrolment form. It is never too early to get all the paperwork started. If you know any families

that intend to enrol for next year, please encourage them to start the process as soon as possible in order to assist with orientation arrangements.

P&C NEWS



**CPS
FATHER'S
DAY STALL**

**FRIDAY
AUGUST 31ST**

Presents between \$2 & \$5

**Raffle tickets \$1 for 3
(limit of \$3 to be fair to everyone)**

**If you are able to assist with
set up/selling/pack up (approx 2 hours)
Please SMS Beck on
0423 153 484**

PIC•COLLAGE

<div></div>		
Week 1	Week 2	Total
Kindy \$58.80	\$18.85	\$77.65
1/2K \$87.30	\$68.25	\$155.55
1/2J \$65.25	\$25.75	\$91.00
Yr 3 \$18.10	\$52.25	\$70.35
Yr 4 \$47.30	\$15.35	\$62.65
Yr 5 \$70.80	\$45	\$115.80
Yr 6 \$37.65	\$57.15	\$94.80
Total \$385.20	Total \$282.60	
Grand Total \$667.80		
PIC•COLLAGE		





PIC•COLLAGE

YMCA OOSH NEWS



**YMCA Little Bay COS
OSHC**

Available at
Chifley Public Schools

The YMCA is a childsafe organisation, we acknowledge that we are living our safety value for children and young people.

Before + After School Care

We value and respect parents as partners in the care and education of children. Our program follows the National Quality Framework, offering a range of exciting activities that encourages independent learners.

ENROL today to secure your child's place!
ymcansw.org.au/littlebay

0407 184 899 - 0437 804 871
oshc.littlebay@ymcansw.org.au

YMCA NSW
EMPOWERMENT/HEALTHY LIVING/SOCIAL IMPACT

SAFETY PARTNERSHIP
CHILDREN

YMCA

COMMUNITY NEWS

ARE YOU INTERESTED IN YOUR CHILD LEARNING MANDARIN?

Enquire Now! Welcome to learn one of the world's most popular languages and culture in the Eastern Suburbs.

ML Language and Culture School Australia INC

Introduction of Mandarin Lessons at Chifley Public School

Dear Parents, ML Language and Culture School Australia Incorporated is an Eastern Suburbs local community school. We teach pure Mandarin language and Chinese traditional culture, adopting an Australian teaching approach. The teachers have qualifications from Sydney University and have many years experience in teaching students. Currently I hold Mandarin classes for the Randwick and Bayside Council areas, for the Manubra and Eastgarden Libraries and the Mandarin INC. The students are of all ages.

We are seeking your expression of interest in classes every Saturday, for beginners and advanced students, at Chifley Public School. The classes are for kindergarten to year 12 students and will concentrate on speaking, writing and reading skills as well as learning the Chinese culture. The children must be available to attend 75% of the lessons.

If you are interested could you please email your preference for lessons times, and how many hours you would like your child to attend, to mengl66@hotmail.com.

Please do not hesitate to contact me on 0432098651 if you are interested or have any further enquiries.

Meng Li (Lili)




FREE -Parent Information Session
Thursday
6th September 2018
10am—12pm

Bookings:
Ph: 02 8338 8506
E: familysupport@secc.sydney
South Eastern Community Connect
Family Support Team

Bilingualism and Screen Time

Presented by Anna Kerns Speech Pathologist at Sydney Children's Hospital

How do Children learn more than one language?

Will it delay their Speech?

How long should my child be in front of a screen?

Join us to learn more about bilingualism speech development and appropriate screen time for children.

No children are allowed in the session.

Nur Free LIMITED Childcare is available: \$20 per Child

Bookings Essential

Please contact South Eastern Community Connect Family Support Team

Ph: (02) 8338 8506 or email: familysupport@secc.sydney

www.secc.sydney




FREE Parent Information Session
Wednesday
12 September
10am - 12pm

Bookings Essential
8338 8506
familysupport@secc.sydney
South Eastern Community Connect
Family Support Team

CPR & 1st Aid for Children

Presented by Dr Debbie Perkins, Sydney Children's Hospital

Join us for a parent information session. Topics include: Choking, drowning, sunburn & stings. Learn about CPR (Cardiopulmonary Resuscitation) for children and see a demonstration.

NO CHILDCARE

No Children are allowed in the session.

www.secc.sydney





FREE Parent Information Session
 Wednesday
 21 November
 10am - 12pm

Bookings Essential
 8338 8506
familysupport@secc.sydney
 South Eastern Community Connect
 Family Support Team

CPR & 1st Aid for Children

Presented by Dr Debbie Perkins, Sydney Children's Hospital

Join us for a parent information session. Topics include: Choking, drowning, sunburn & stings. Learn about CPR (Cardiopulmonary Resuscitation) for children and see a demonstration.

NO CHILDCARE

No Children are allowed in the session.

www.secc.sydney




Saturdays
 17, 24 November &
 1 December
 9-11am
FREE

Bookings Essential:
 8338 8506
familysupport@secc.sydney
 South Eastern Community Connect
 Family Support Team

Dads and Bubs Bonding

Workshop for all dads, grandads and male carers with babies ideally aged 12 months or under

This workshop will cover the practicalities of feeding, settling, sleeping, infant communication, baby massage and infant play. It will help dads, grandads and male carers to gain a basic understanding of infant development as well as exploring what it means to be a father.

Run over 3 consecutive weeks.

NO childcare available.

www.secc.sydney




Saturdays
 29 September &
 6, 13 October
 9-11am
FREE

Bookings Essential:
 8338 8506
familysupport@secc.sydney
 South Eastern Community Connect
 Family Support Team

Dads and Bubs Bonding

Workshop for all dads, grandads and male carers with babies ideally aged 12 months or under

This workshop will cover the practicalities of feeding, settling, sleeping, infant communication, baby massage and infant play. It will help dads, grandads and male carers to gain a basic understanding of infant development as well as exploring what it means to be a father.

Run over 3 consecutive weeks.

NO childcare available.

www.secc.sydney




Saturday
 1 September
 9 - 11am
FREE

Bookings Essential
 02 8338 8506
familysupport@secc.sydney
 South Eastern Community Connect
 Family Support Team

Play Power for Dads

Making the Most of Everyday Moments from Birth to 3 years!

Learn to:

- Build loving relationships with your children and capitalise on daily routines.
- Play, have fun and relax with your children and give positive responses to build self-esteem.
- Establish rituals that strengthen family bonds and use repetition to promote learning and development.

Play Power Workshops provide dads with early childhood and brain development information and ideas for play activities using everyday household items.

No children allowed in session

www.secc.sydney





Tuesdays
Eastlakes Public School
Large Hall

10.00am-12.00pm
During School Terms
\$3 per session & a piece of fruit
Enquiries: (02) 8338 8506

Supported Playgroups

Supported playgroups aim to empower families to support young children's development through participation in a variety of developmentally appropriate play. Supported playgroups are led by qualified early childhood educators and allow families to participate in a range of new activities and experiences.

Our staff are qualified in Blue Book assessments, key word signing, active play and healthy nutrition as well as guest speakers coming regularly. We also have a family worker who attends all our playgroups, if you need that little bit of extra help.

To enquire please contact our Family Support Team on (02) 8338 8506 or email familysupport@secc.sydney

www.secc.sydney




Wednesdays
Kensington Park Community Centre
Hall 1

10am-12pm
During School Terms
\$3 per session & a piece of fruit

Enquiries: 8338 8506
familysupport@secc.sydney
South Eastern Community Connect Family Support Team

Supported Playgroups

Supported playgroups aim to empower families to support young children's development through participation in a variety of developmentally appropriate play. Supported playgroups are led by qualified early childhood educators and allow families to participate in a range of new activities and experiences.

Our staff are qualified in Blue Book assessments, key word signing, active play and healthy nutrition. We regularly have guest speakers, and a Family Worker is available if you need that little bit of extra help.

www.secc.sydney




Mondays
Gardeners Rd Public School
Large Hall
Entry via smallGate
Botany Rd near bus shelter—ring doorbell.

10.00am-12.00pm
During School Terms
\$3 per session & a piece of fruit
Enquiries: (02) 8338 8506

Supported Playgroups

Supported playgroups aim to empower families to support young children's development through participation in a variety of developmentally appropriate play. Supported playgroups are led by qualified early childhood educators and allow families to participate in a range of new activities and experiences.

Our staff are qualified in Blue Book assessments, key word signing, active play and healthy nutrition as well as guest speakers coming regularly. We also have a family worker who attends all our playgroups, if you need that little bit of extra help.

To enquire please contact our Family Support Team on (02) 8338 8506 or email familysupport@secc.sydney

Venue directions on back of flyer




TERM 3
Fridays
3 Aug-28 Sept

TERM 4
Fridays
26 Oct-7 Dec
\$15 per Term

Enquiries: 8338 8506
familysupport@secc.sydney
South Eastern Community Connect Family Support Team

Mums English Class with Childcare

Learn English with your child! Join our English classes and enjoy half hour of reading, songs and activities with your child.

Please bring a piece of fruit to share and a drink for your child.

www.secc.sydney





Tuesdays
6, 13 & 20 November
5.30-7.30pm
FREE
3 week seminar series

Bookings Essential
8338 8506
familysupport@secc.sydney
South Eastern Community Connect
Family Support Team

Triple P Seminars Series

Triple P is an approach to parenting that emphasises the positive.

We can Help you:

- Encourage behaviours you like from your child.
- Deal consistently and decisively with problem behaviour.

Every child is different, but sometimes small changes and new ways of doing things can make a big difference to the everyday routine. If you have children between the ages of 2-12 years we have a range of Triple P Positive Parenting Programs to suit your family.

NO CHILDCARE AVAILABLE.

www.secc.sydney



familiesnsw
supporting families to raise children



Chifley Public School

Located in the
School hall (entry
via Burke St)

10.00am-12.00pm
Thursdays
During School Terms
\$3 per session & a piece of fruit
Enquiries: (02) 8338 8502

Supported Playgroups

Supported playgroups aim to empower families to support young children's development through participation in a variety of developmentally appropriate play. Supported playgroups are led by qualified early childhood educators and allow families to participate in a range of new activities and experiences.

Our staff are qualified in Blue Book assessments, key word signing, active play and healthy nutrition as well as guest speakers coming regularly. We also have a family worker who attends all our playgroups, if you need that little bit of extra help.

To enquire please contact our Family Support Team on (02) 8338 8506 or email familysupport@secc.sydney

www.secc.sydney



familiesnsw
supporting families to raise children



Tuesdays
20, 27 November
10 - 12pm
2 week Group
FREE

Bookings Essential
8338 8506
familysupport@secc.sydney
South Eastern Community Connect
Family Support Team

You Can Play Too!

Do you want to be more creative in your play with your child? Would you like to learn some new ways to connect with your child by using Positive Parenting (Triple P) techniques?

You Can Play Too! is a workshop for you and your child to connect or reconnect: every developmental stage means changing how you communicate with your child. As your child grows and changes, so does your relationship - discover new ways to make the most of each amazing stage.

Come to our fun and interactive workshop with your 2-4 year old child and play!

2 x 2 hour sessions: structured & unstructured play, relaxation techniques and fun with music!

www.secc.sydney



familiesnsw
supporting families to raise children



we're open

enrol now

Early Learning Centre

0499 10 33 13 info@123fourclc.com.au

Don't forget to follow us on Facebook and Twitter for more up to date and exciting news!!

<https://www.facebook.com/ChifleyPublicSchool>

<https://twitter.com/ChifleyPS>